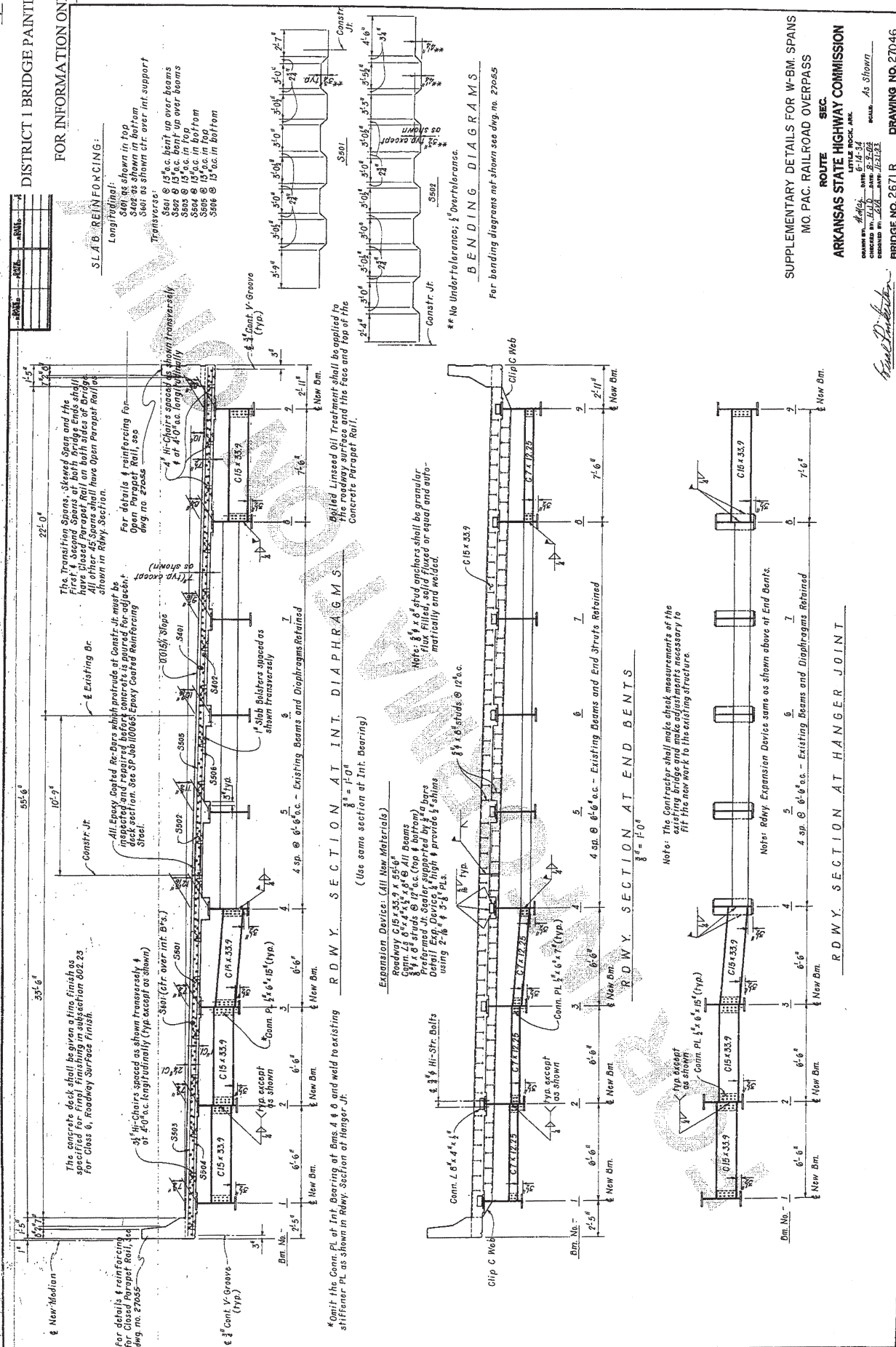
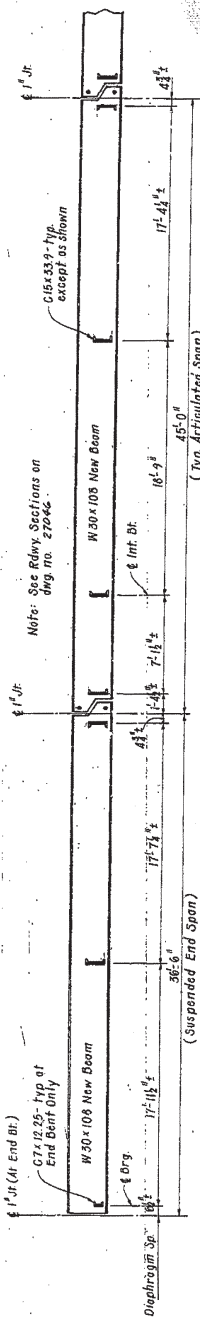


FOR INFORMATION ONLY

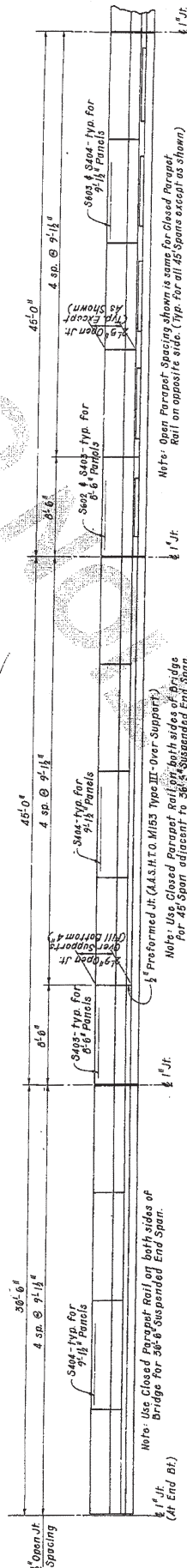


FOR INFORMATION ONLY

DATE	BY	CHK



ELEVATION OF NEW BEAMS



ELEVATION OF PARAPET RAIL

BAR LIST FOR 36'-6" SUSPENDED END SPAN

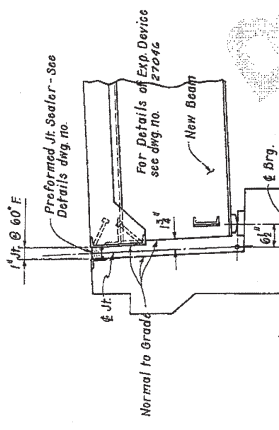
MK	No. Req'd	Length	Pin Dia.
* S501	35	16'-10 1/4"	2 1/2"
* S502	35	16'-10 1/4"	2 1/2"
* S503	35	16'-10 1/4"	2 1/2"
* S504	35	16'-10 1/4"	2 1/2"
* S505	35	16'-10 1/4"	2 1/2"
* S506	35	16'-10 1/4"	2 1/2"
* S507	35	16'-10 1/4"	2 1/2"
* S508	35	16'-10 1/4"	2 1/2"
* S509	35	16'-10 1/4"	2 1/2"
* S510	35	16'-10 1/4"	2 1/2"
* S511	35	16'-10 1/4"	2 1/2"
* S512	35	16'-10 1/4"	2 1/2"
* S513	35	16'-10 1/4"	2 1/2"
* S514	35	16'-10 1/4"	2 1/2"
* S515	35	16'-10 1/4"	2 1/2"
* S516	35	16'-10 1/4"	2 1/2"
* S517	35	16'-10 1/4"	2 1/2"
* S518	35	16'-10 1/4"	2 1/2"
* S519	35	16'-10 1/4"	2 1/2"
* S520	35	16'-10 1/4"	2 1/2"

BAR LIST FOR 45'-0" SPAN (CLOSED PARAPET RAIL ONLY)

MK	No. Req'd	Length	Pin Dia.
* S501	57	16'-6"	2 1/2"
* S502	41	16'-10 1/4"	2 1/2"
* S503	41	16'-10 1/4"	2 1/2"
* S504	41	16'-10 1/4"	2 1/2"
* S505	41	16'-10 1/4"	2 1/2"
* S506	41	16'-10 1/4"	2 1/2"
* S507	41	16'-10 1/4"	2 1/2"
* S508	41	16'-10 1/4"	2 1/2"
* S509	41	16'-10 1/4"	2 1/2"
* S510	41	16'-10 1/4"	2 1/2"
* S511	41	16'-10 1/4"	2 1/2"
* S512	41	16'-10 1/4"	2 1/2"
* S513	41	16'-10 1/4"	2 1/2"
* S514	41	16'-10 1/4"	2 1/2"
* S515	41	16'-10 1/4"	2 1/2"
* S516	41	16'-10 1/4"	2 1/2"
* S517	41	16'-10 1/4"	2 1/2"
* S518	41	16'-10 1/4"	2 1/2"
* S519	41	16'-10 1/4"	2 1/2"
* S520	41	16'-10 1/4"	2 1/2"

BAR LIST FOR 45'-0" SPAN (OPEN & CLOSED PARAPET RAIL ONLY)

MK	No. Req'd	Length	Pin Dia.
* S501	57	16'-6"	2 1/2"
* S502	41	16'-10 1/4"	2 1/2"
* S503	41	16'-10 1/4"	2 1/2"
* S504	41	16'-10 1/4"	2 1/2"
* S505	41	16'-10 1/4"	2 1/2"
* S506	41	16'-10 1/4"	2 1/2"
* S507	41	16'-10 1/4"	2 1/2"
* S508	41	16'-10 1/4"	2 1/2"
* S509	41	16'-10 1/4"	2 1/2"
* S510	41	16'-10 1/4"	2 1/2"
* S511	41	16'-10 1/4"	2 1/2"
* S512	41	16'-10 1/4"	2 1/2"
* S513	41	16'-10 1/4"	2 1/2"
* S514	41	16'-10 1/4"	2 1/2"
* S515	41	16'-10 1/4"	2 1/2"
* S516	41	16'-10 1/4"	2 1/2"
* S517	41	16'-10 1/4"	2 1/2"
* S518	41	16'-10 1/4"	2 1/2"
* S519	41	16'-10 1/4"	2 1/2"
* S520	41	16'-10 1/4"	2 1/2"



JOINT DETAIL AT END BENT

Note: For bending diagrams of S501 & S502 see dng. no. 27046. For bending diagrams of S503-S520 see dng. no. 27055.

SHEET 1 OF 2

DETAILS OF 36'-6" & 45'-0" SPANS
 MO. PAC. RAILROAD OVERPASS

ROUTE SEC.
 ARKANSAS STATE HIGHWAY COMMISSION

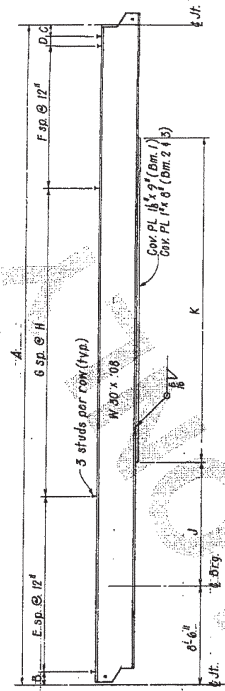
DATE: 11/10/00
 DRAWN BY: JLD
 CHECKED BY: JLD
 DESIGNED BY: JLD
 SCALE: As Shown

BRIDGE NO. 2671R
 DRAWING NO. 27047

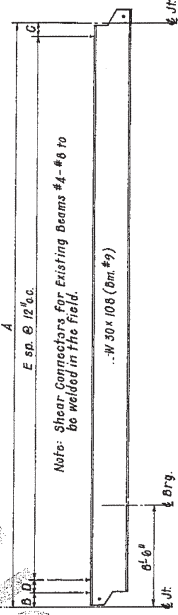
BRIDGE ENGINEER

FOR INFORMATION ONLY

ITEM	QTY	UNIT	AMOUNT
1	1	EA	1.00
2	1	EA	1.00
3	1	EA	1.00
4	1	EA	1.00
5	1	EA	1.00
6	1	EA	1.00
7	1	EA	1.00
8	1	EA	1.00
9	1	EA	1.00
10	1	EA	1.00



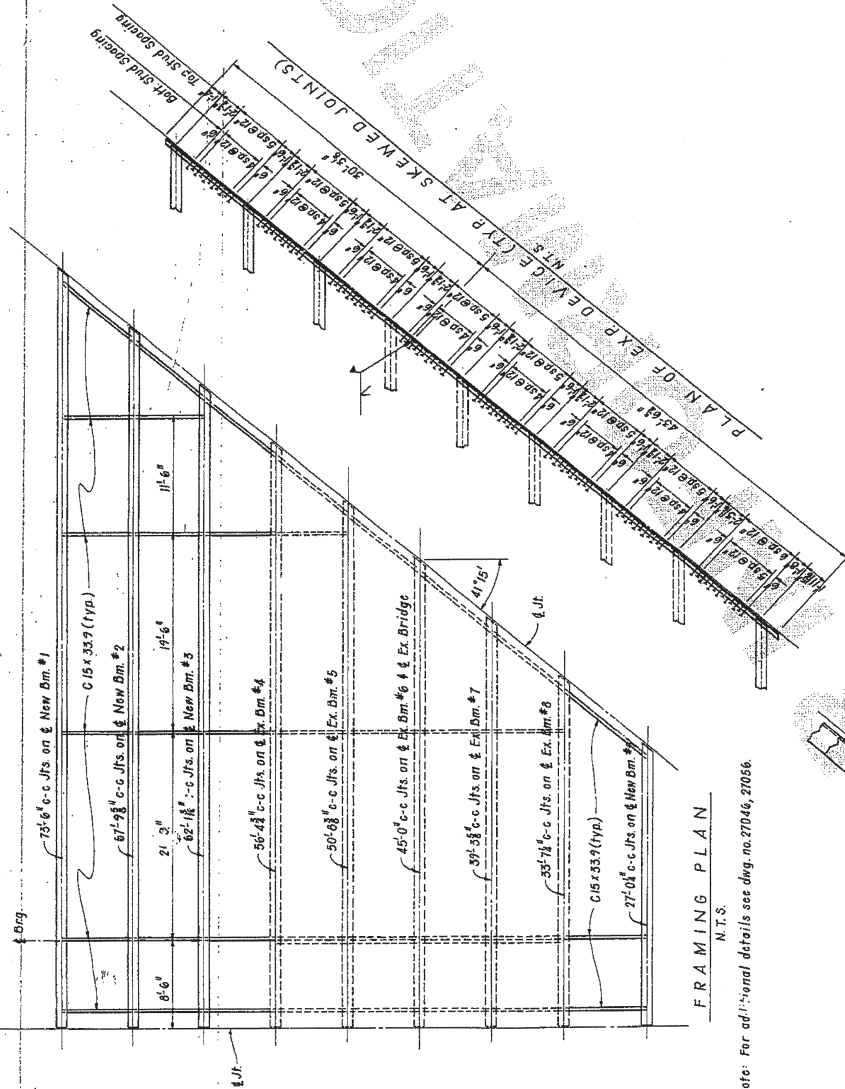
ELEVATION OF NEW BEAMS #1-#3
N.T.S.



ELEVATION OF EX. BEAMS #4-#6 & NEW BEAM #9
N.T.S.

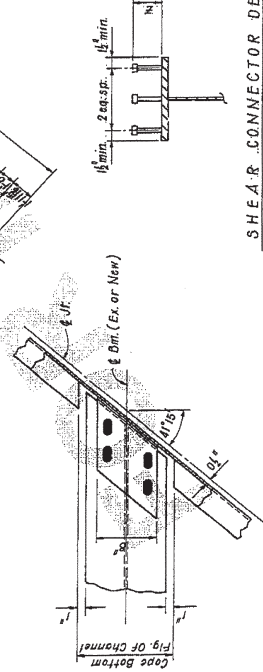
TABLE OF VARIABLES

Variable	New Dm #1	New Dm #2	New Dm #3	Ex. Dm #4	Ex. Dm #5	Ex. Dm #6	Ex. Dm #7	Ex. Dm #8	New Dm #9
A	75'-0"	67'-0"	62'-0"	50'-0"	45'-0"	40'-0"	35'-0"	30'-0"	27'-0"
B	12"	12"	12"	12"	12"	12"	12"	12"	12"
C	12"	12"	12"	12"	12"	12"	12"	12"	12"
D	10"	10"	10"	10"	10"	10"	10"	10"	10"
E	25'	25'	25'	25'	25'	25'	25'	25'	25'
F	15'	15'	15'	15'	15'	15'	15'	15'	15'
G	23'	23'	23'	23'	23'	23'	23'	23'	23'
H	16'	16'	16'	16'	16'	16'	16'	16'	16'
J	9'-9"	10'-5"	11'-1"	11'-1"	11'-1"	11'-1"	11'-1"	11'-1"	11'-1"
K	46'-0"	39'-0"	32'-0"	25'-0"	18'-0"	11'-0"	4'-0"	1'-0"	0'-0"
Z	4'	4'	4'	4'	4'	4'	4'	4'	4'



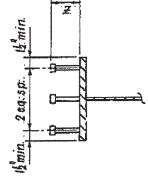
FRAMING PLAN
N.T.S.

Note: For additional details see drawing no. 27046, 27056.



CHANNEL CONNECTION
N.T.S.

(Typical At Stewed Joints)



SHEAR CONNECTOR DETAIL

Stud Shear Connectors shall be 3/4" x 1/2" long granular flux filled, solid fluid or equal and automatically welded in place. The studs are estimated at 8.5 lb. per 100 sq. ft. of surface. The studs are 0.75" x 8" studs in place of 1 1/2" stud.

(TRANSITION SPAN 1)
SHEET 2 OF 2

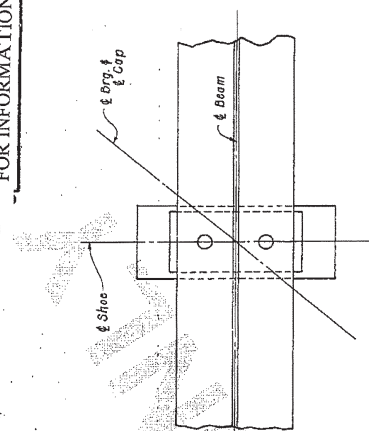
DETAILS OF 45'-0" TRANSITION SPAN
MO. PAC. RAILROAD OVERPASS

ROUTE
SEC.
ARKANSAS STATE HIGHWAY COMMISSION

DESIGNED BY: J. H. L. DATE: 8-28-64
CHECKED BY: J. H. L. DATE: 10-21-64
SCALE: As Shown

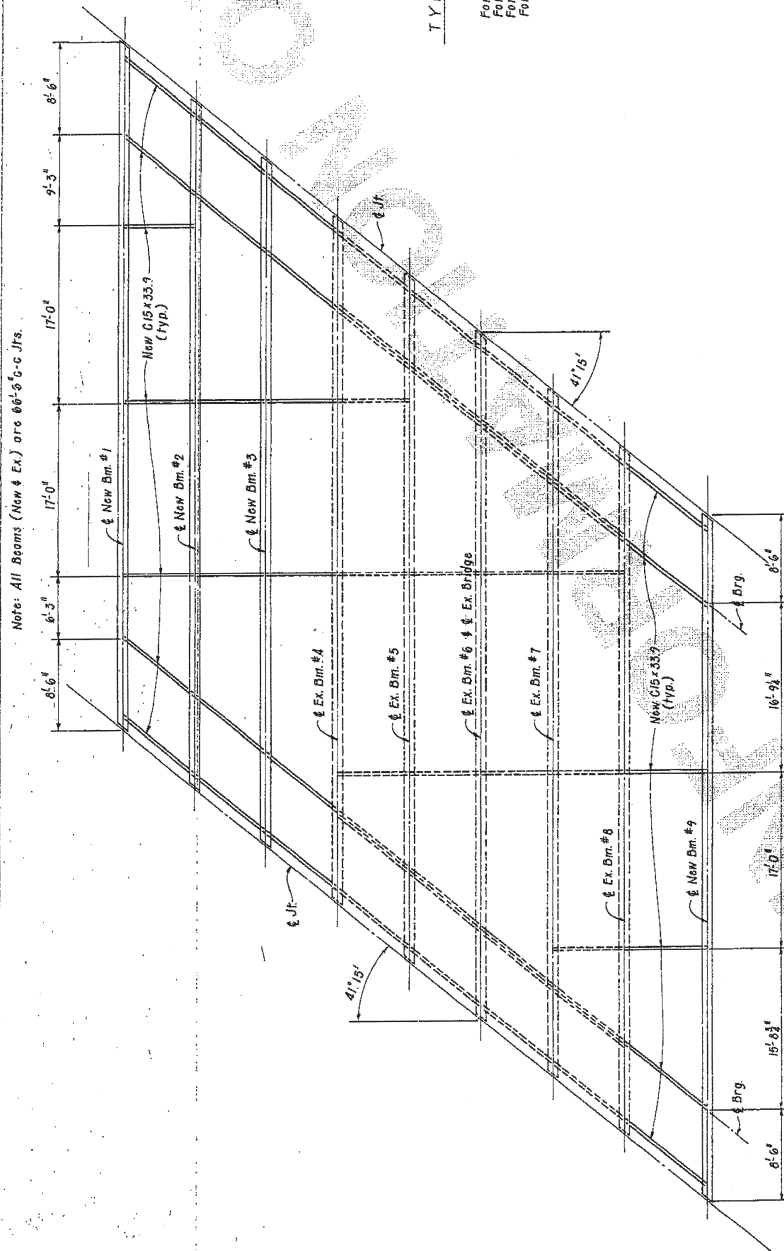
BRIDGE NO. 2671R
DRAWING NO. 27050

FOR INFORMATION ONLY



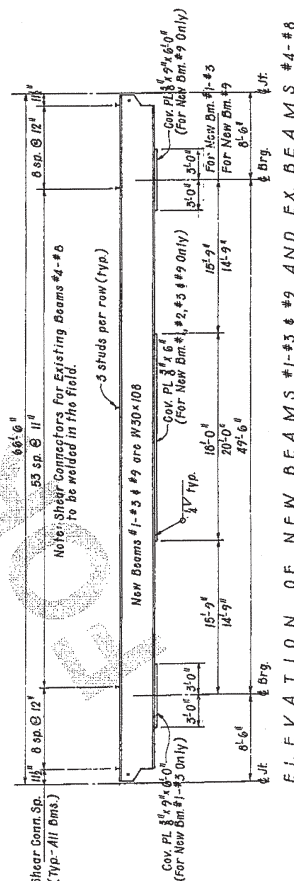
TYP BEARING PLAN AT PIERS 1 & 2
N.T.S.

For Details of Shoes & Anchor Bolts see dwg. no. 27056.
For Details of Exp. Device see dwg. no. 27050, 27056.
For Details of Shear Connectors see dwg. no. 27050.
For Supplementary Details see dwg. no. 27046, 27056.



FRAMING PLAN

N.T. S.



ELEVATION OF NEW BEAMS #1-#3 & #9 AND EX. BEAMS #4-#8

SHEET 2 OF 2

DETAILS OF 66'-6" SKEWED SPAN
MO. PAC. RAILROAD OVERPASS

ROUTE	SEC.
1	1
2	2
3	3
4	4
5	5
6	6
7	7
8	8
9	9
10	10
11	11
12	12
13	13
14	14
15	15
16	16
17	17
18	18
19	19
20	20
21	21
22	22
23	23
24	24
25	25
26	26
27	27
28	28
29	29
30	30
31	31
32	32
33	33
34	34
35	35
36	36
37	37
38	38
39	39
40	40
41	41
42	42
43	43
44	44
45	45
46	46
47	47
48	48
49	49
50	50
51	51
52	52
53	53
54	54
55	55
56	56
57	57
58	58
59	59
60	60
61	61
62	62
63	63
64	64
65	65
66	66
67	67
68	68
69	69
70	70
71	71
72	72
73	73
74	74
75	75
76	76
77	77
78	78
79	79
80	80
81	81
82	82
83	83
84	84
85	85
86	86
87	87
88	88
89	89
90	90
91	91
92	92
93	93
94	94
95	95
96	96
97	97
98	98
99	99
100	100

ROUTE SEC. ARKANSAS STATE HIGHWAY COMMISSION

UK.

As Shown

SCALE 710 0100111

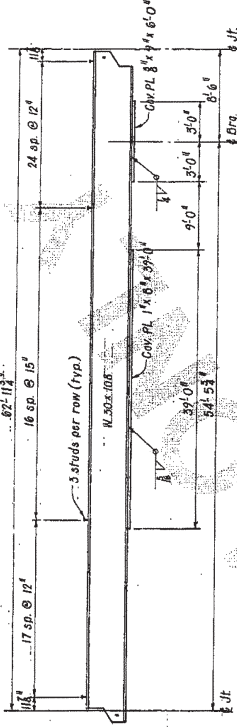
DRAWING NO. 27052

BRIDGE NO. 2671R

Fandels

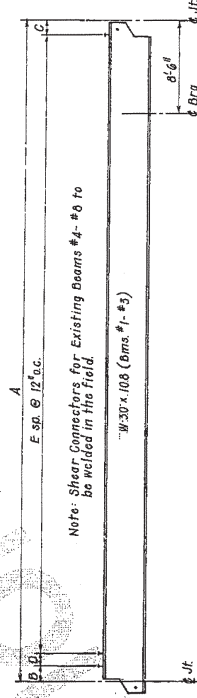
DATE	BY	CHKD	APPD

FOR INFORMATION ONLY



ELEVATION OF NEW BEAM #9

N.T.S.



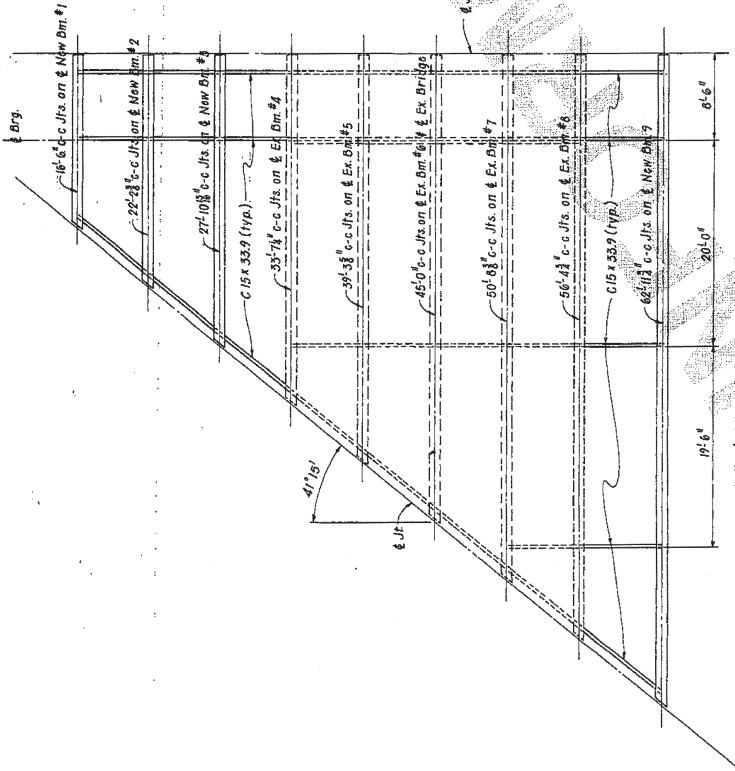
ELEVATION OF NEW BEAMS #1-#3 & EX. BEAMS #4-#8

N.T.S.

TABLE OF VARIABLES

Variable	New Dm #1	New Dm #2	New Dm #3	Ex Dm #4	Ex Dm #5	Ex Dm #6	Ex Dm #7	Ex Dm #8	New Dm #9
A	15'-6"	22'-0"	27'-0"	35'-0"	39'-0"	45'-0"	50'-0"	56'-0"	56'-0"
B	14'-0"	14'-0"	14'-0"	14'-0"	14'-0"	14'-0"	14'-0"	14'-0"	14'-0"
C	14'-0"	14'-0"	14'-0"	14'-0"	14'-0"	14'-0"	14'-0"	14'-0"	14'-0"
D	14'-0"	14'-0"	14'-0"	14'-0"	14'-0"	14'-0"	14'-0"	14'-0"	14'-0"
E	14'-0"	14'-0"	14'-0"	14'-0"	14'-0"	14'-0"	14'-0"	14'-0"	14'-0"
F	14'-0"	14'-0"	14'-0"	14'-0"	14'-0"	14'-0"	14'-0"	14'-0"	14'-0"
G	14'-0"	14'-0"	14'-0"	14'-0"	14'-0"	14'-0"	14'-0"	14'-0"	14'-0"
H	14'-0"	14'-0"	14'-0"	14'-0"	14'-0"	14'-0"	14'-0"	14'-0"	14'-0"
I	14'-0"	14'-0"	14'-0"	14'-0"	14'-0"	14'-0"	14'-0"	14'-0"	14'-0"
J	14'-0"	14'-0"	14'-0"	14'-0"	14'-0"	14'-0"	14'-0"	14'-0"	14'-0"
K	14'-0"	14'-0"	14'-0"	14'-0"	14'-0"	14'-0"	14'-0"	14'-0"	14'-0"
L	14'-0"	14'-0"	14'-0"	14'-0"	14'-0"	14'-0"	14'-0"	14'-0"	14'-0"
M	14'-0"	14'-0"	14'-0"	14'-0"	14'-0"	14'-0"	14'-0"	14'-0"	14'-0"
N	14'-0"	14'-0"	14'-0"	14'-0"	14'-0"	14'-0"	14'-0"	14'-0"	14'-0"
O	14'-0"	14'-0"	14'-0"	14'-0"	14'-0"	14'-0"	14'-0"	14'-0"	14'-0"
P	14'-0"	14'-0"	14'-0"	14'-0"	14'-0"	14'-0"	14'-0"	14'-0"	14'-0"
Q	14'-0"	14'-0"	14'-0"	14'-0"	14'-0"	14'-0"	14'-0"	14'-0"	14'-0"
R	14'-0"	14'-0"	14'-0"	14'-0"	14'-0"	14'-0"	14'-0"	14'-0"	14'-0"
S	14'-0"	14'-0"	14'-0"	14'-0"	14'-0"	14'-0"	14'-0"	14'-0"	14'-0"
T	14'-0"	14'-0"	14'-0"	14'-0"	14'-0"	14'-0"	14'-0"	14'-0"	14'-0"
U	14'-0"	14'-0"	14'-0"	14'-0"	14'-0"	14'-0"	14'-0"	14'-0"	14'-0"
V	14'-0"	14'-0"	14'-0"	14'-0"	14'-0"	14'-0"	14'-0"	14'-0"	14'-0"
W	14'-0"	14'-0"	14'-0"	14'-0"	14'-0"	14'-0"	14'-0"	14'-0"	14'-0"
X	14'-0"	14'-0"	14'-0"	14'-0"	14'-0"	14'-0"	14'-0"	14'-0"	14'-0"
Y	14'-0"	14'-0"	14'-0"	14'-0"	14'-0"	14'-0"	14'-0"	14'-0"	14'-0"
Z	14'-0"	14'-0"	14'-0"	14'-0"	14'-0"	14'-0"	14'-0"	14'-0"	14'-0"

For details of Exp. Device at Skewed Joint see dng no. 27050
 For details of Exp. Device at Square Joint see dng no. 27046, 27056
 For details of Shear Connectors see dng no. 27050
 For details of Shear Connectors see dng no. 27056
 For Supplementary Details see dng no. 27046, 27056



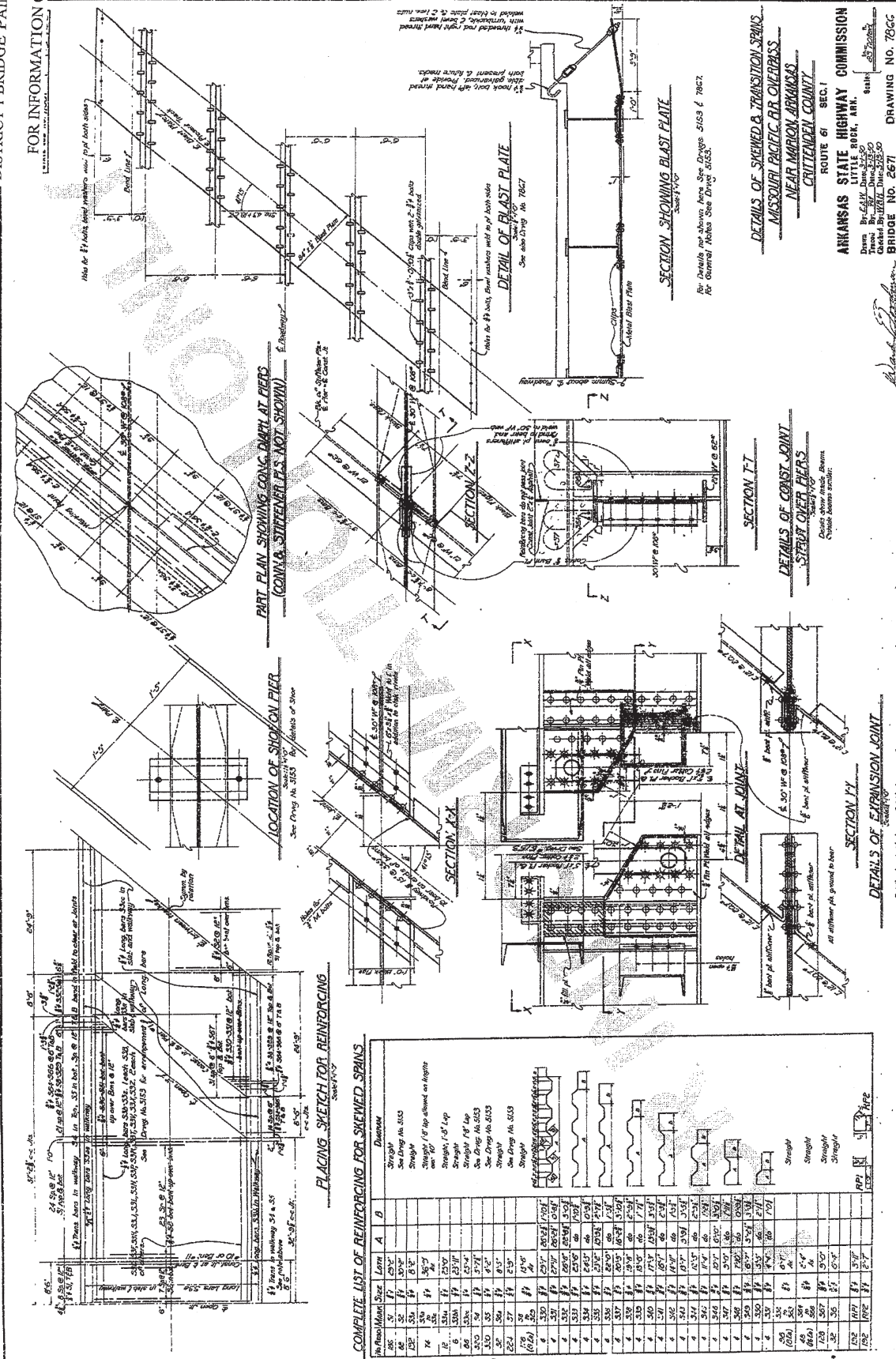
FRAMING PLAN

N.T.S.

(TRANSITION SPAN 2)
 SHEET 2 OF 2

DETAILS OF 45'-0" TRANSITION SPAN
 MO. PAC. RAILROAD OVERPASS
 ROUTE
 ARKANSAS STATE HIGHWAY COMMISSION
 LITTLE ROCK, ARK.
 DRAWN BY: H. H. H. DATE: 7-5-64
 CHECKED BY: J. J. J. DATE: 8-9-64
 DESIGNED BY: J. J. J. DATE: 12-25-63
 BRIDGE NO. 2671R DRAWING NO. 27054

FOR INFORMATION ONLY



COMPLETE LIST OF REINFORCING FOR SKEWED SPANS

W	H	Max	Min	Size	Long	A	B	Diagrams
12	36	36	36	1/2"	36"	12"	36"	Single
12	36	36	36	3/4"	36"	12"	36"	Single
12	36	36	36	1"	36"	12"	36"	Single
12	36	36	36	1 1/4"	36"	12"	36"	Single
12	36	36	36	1 1/2"	36"	12"	36"	Single
12	36	36	36	1 3/4"	36"	12"	36"	Single
12	36	36	36	2"	36"	12"	36"	Single
12	36	36	36	2 1/4"	36"	12"	36"	Single
12	36	36	36	2 1/2"	36"	12"	36"	Single
12	36	36	36	2 3/4"	36"	12"	36"	Single
12	36	36	36	3"	36"	12"	36"	Single
12	36	36	36	3 1/4"	36"	12"	36"	Single
12	36	36	36	3 1/2"	36"	12"	36"	Single
12	36	36	36	3 3/4"	36"	12"	36"	Single
12	36	36	36	4"	36"	12"	36"	Single
12	36	36	36	4 1/4"	36"	12"	36"	Single
12	36	36	36	4 1/2"	36"	12"	36"	Single
12	36	36	36	4 3/4"	36"	12"	36"	Single
12	36	36	36	5"	36"	12"	36"	Single
12	36	36	36	5 1/4"	36"	12"	36"	Single
12	36	36	36	5 1/2"	36"	12"	36"	Single
12	36	36	36	5 3/4"	36"	12"	36"	Single
12	36	36	36	6"	36"	12"	36"	Single
12	36	36	36	6 1/4"	36"	12"	36"	Single
12	36	36	36	6 1/2"	36"	12"	36"	Single
12	36	36	36	6 3/4"	36"	12"	36"	Single
12	36	36	36	7"	36"	12"	36"	Single
12	36	36	36	7 1/4"	36"	12"	36"	Single
12	36	36	36	7 1/2"	36"	12"	36"	Single
12	36	36	36	7 3/4"	36"	12"	36"	Single
12	36	36	36	8"	36"	12"	36"	Single
12	36	36	36	8 1/4"	36"	12"	36"	Single
12	36	36	36	8 1/2"	36"	12"	36"	Single
12	36	36	36	8 3/4"	36"	12"	36"	Single
12	36	36	36	9"	36"	12"	36"	Single
12	36	36	36	9 1/4"	36"	12"	36"	Single
12	36	36	36	9 1/2"	36"	12"	36"	Single
12	36	36	36	9 3/4"	36"	12"	36"	Single
12	36	36	36	10"	36"	12"	36"	Single
12	36	36	36	10 1/4"	36"	12"	36"	Single
12	36	36	36	10 1/2"	36"	12"	36"	Single
12	36	36	36	10 3/4"	36"	12"	36"	Single
12	36	36	36	11"	36"	12"	36"	Single
12	36	36	36	11 1/4"	36"	12"	36"	Single
12	36	36	36	11 1/2"	36"	12"	36"	Single
12	36	36	36	11 3/4"	36"	12"	36"	Single
12	36	36	36	12"	36"	12"	36"	Single

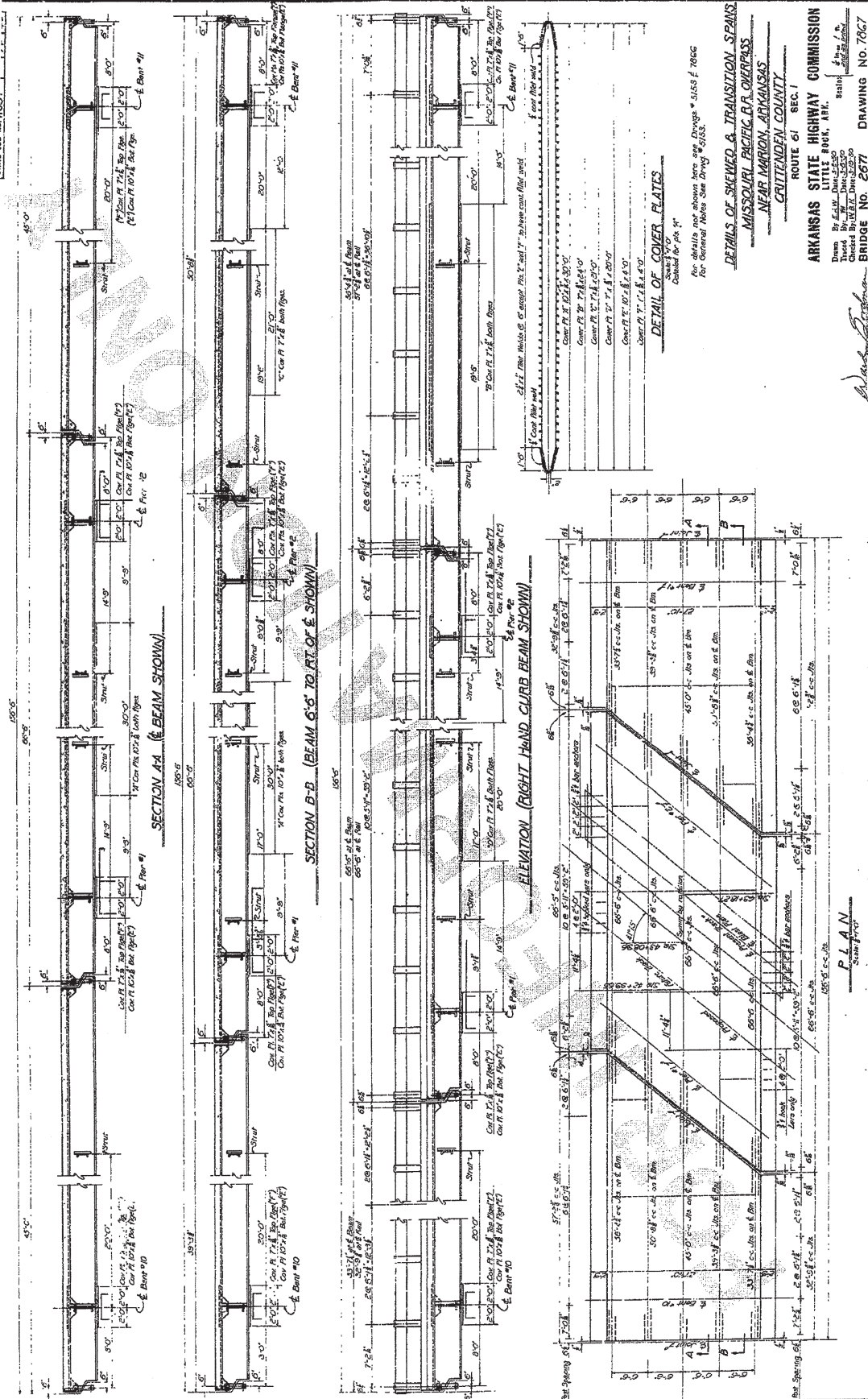
DETAILS OF SKEWED & TRANSITION SPANS
MISSOURI PACIFIC R.R. OVERPASS
NEAR MARION, ARKANSAS
CRITTENDEN COUNTY

ARIZONA STATE HIGHWAY COMMISSION
LITTLE ROCK, ARN.
By: E.A.W. Date: 3-2-50
Overn. Date: 3-15-50
Encl. By: E.A.W. Date: 3-15-50
Checked: By: W.B.H. Date: 3-15-50
BRIDGE NO. 2671
DRAWING NO. 7866

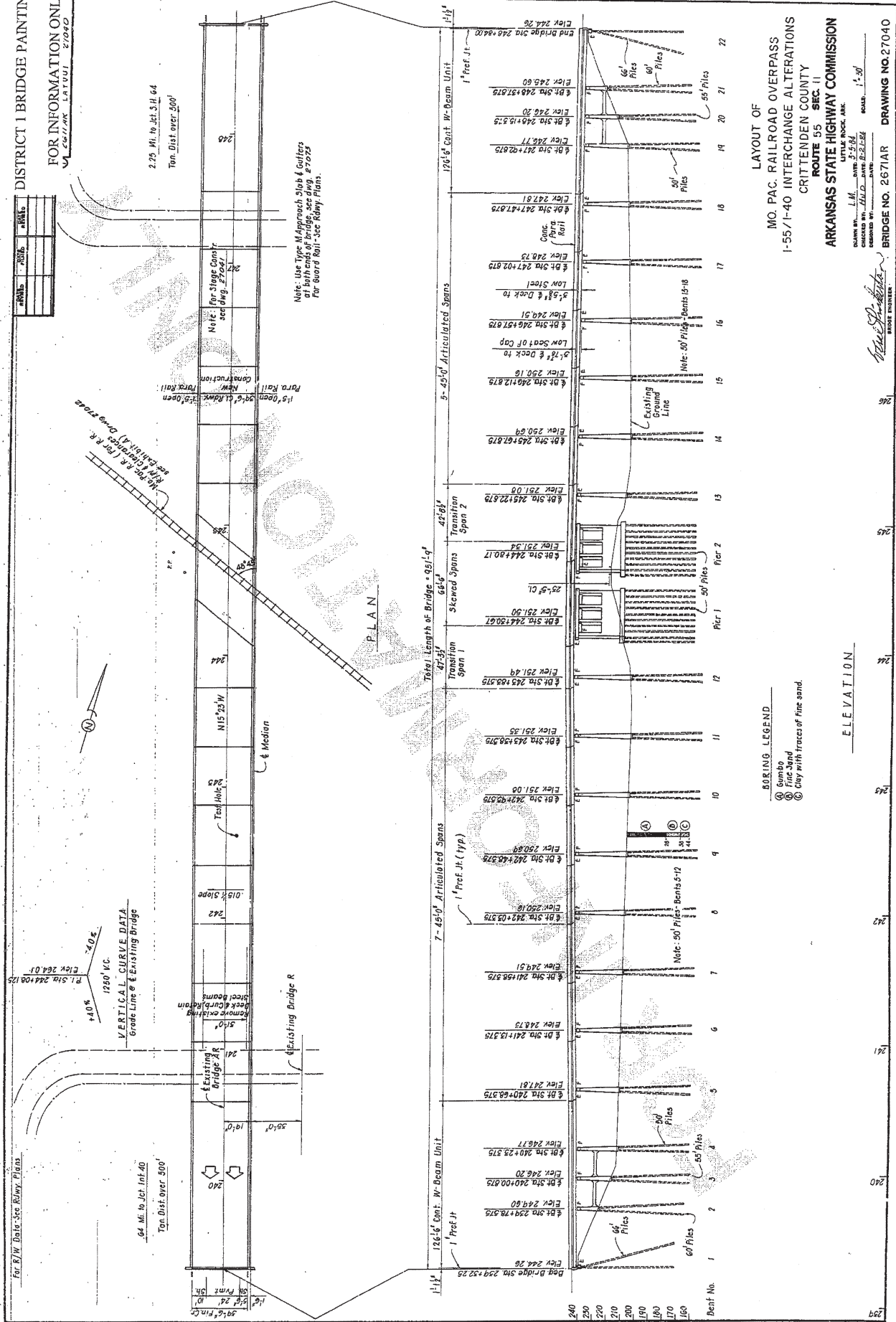
Ward L. Brooks

DISTRICT 1 BRIDGE PAINTING (S)

FOR INFORMATION ONLY



FOR INFORMATION ONLY



FOR INFORMATION ONLY

[illegible]

DATE: _____

CONCRETE: ALL CONCRETE TO BE CLASS 5 OR (S) AS SHOWN ON THE LAYOUT. ALLEXPPOSED CORNERS TO BE CHAMFERED 3/4" UNLESS NOTED OTHERWISE.

CONCRETE SLABS FOR SPANS THRU 50 FEET IN LENGTH SHALL BE POURED IN ONE CONTINUOUS OPERATION WITH A STRIKE OFF EXTENDING OVER THE WHOLE SPAN LENGTH.

THE MINIMUM OF 72 HOURS SHALL ELAPSE BETWEEN COMPLETION OF THE SLAB AND THE POURING OF THE PAVER LAYING OF CURB.

THE REINFORCING STEEL SHALL CONFORM TO ASTM A601 OR A617, GRADE 60.

THE REINFORCING STEEL SHALL BE ACCURATELY LOCATED IN THE FORMS AND FIRMLY HELD IN PLACE BY STEEL WIRE SUPPORTS SUFFICIENT IN NUMBER AND SIZE TO PREVENT DISPLACEMENT DURING THE LAY-UP OF CONSTRUCTION. THE WIRE SUPPORTS WILL NOT BE PAID FOR DIRECTLY BUT WILL BE CONSIDERED SUBSIDIARY TO THE ITEM "REINFORCING STEEL."

STRUCTURAL STEEL: ALL STRUCTURAL STEEL SHALL BE ASTM A36 UNLESS OTHERWISE NOTED.
NEW FIELD CONNECTIONS TO BE BOLTED WITH HIGH STRENGTH BOLTS.

ALL POLYS TO BE 3/4" Ø, WITH 13/16" Ø OPEN HOLES, UNLESS OTHERWISE NOTED.

Holes for 3/4" ϕ bolts for connection of expansion devices, diaphragms, and end struts may be 1/8" if a washer is supplied for use under both the nut and the head of the bolt. Structural shapes of equal or greater strength may be substituted for shapes shown, but payment will be made on the basis of shape shown.

UNLESS OTHERWISE NOTED ON SPAN DETAIL DRAWINGS, ALL STRUCTURAL STEEL, EXCEPT SURFACES IN CONTACT WITH CONCRETE, SHALL BE GIVEN ONE SHOP COAT AND TWO FIELD COATS IN ACCORDANCE WITH SECTION 807.59 OF THE SPECIFICATIONS AND APPLICABLE SPECIAL PROVISIONS.

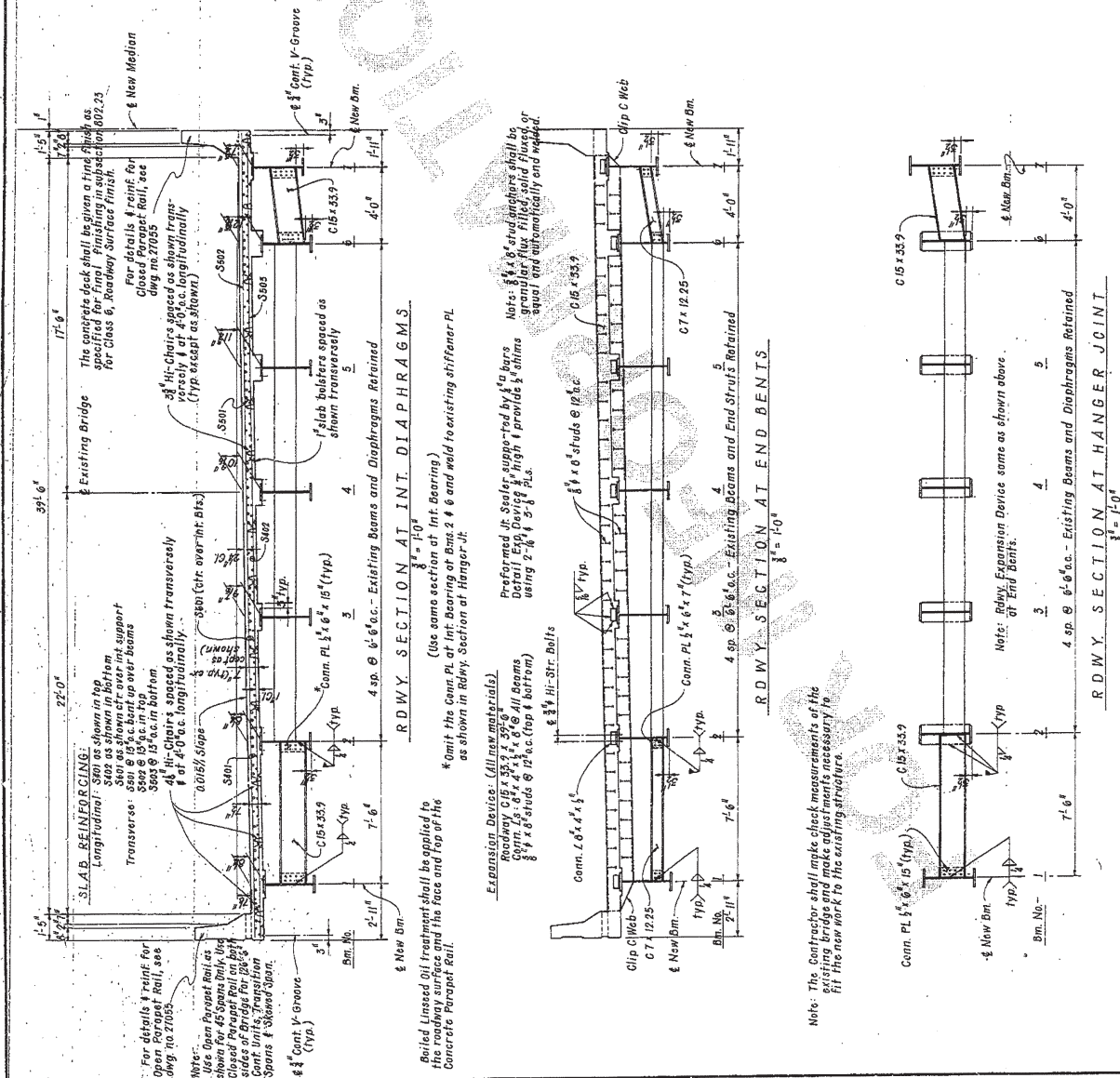
ALL METAL BEARING AND ROADWAY EXPANSION DEVICES TO BE PAID FOR AS "STRUCTURAL STEEL IN BEAM SPANS." BEARINGS SHALL BE FINALLY SEATED IN ACCORDANCE WITH SECTION 807.51 OF THE SPECIFICATION. THIS WORK AND MATERIAL ARE TO BE CONSIDERED AS SUBSIDIARY TO THE ITEM "STRUCTURAL STEEL IN BEAM SPANS" AND WILL NOT BE PAID FOR DIRECTLY.

ALL WELDED CONNECTIONS TO BE 5/16" FILLET SHOP WELDS UNLESS NOTED OTHERWISE. ALL WELDING SHALL CONFORM TO THE AMERICAN WELDING SOCIETY STANDARD SPECIFICATIONS FOR WELDED HIGHWAY AND RAILWAY BRIDGES, CURRENT EDITION.

ANCHOR BOLTS SHALL BE GALVANIZED TO CONFORM TO ASTM SPECIFICATIONS, DESIGNATION A153.

THIS DRAWING SHOWS GENERAL FEATURES OF DESIGN ONLY. SHOP DRAWINGS SHALL BE MADE IN ACCORDANCE WITH THE SPECIFICATIONS, SUBMITTED AND APPROVAL SECURED BEFORE FABRICATION IT BEGUN.

ALL W-BEAMS AND HANGER PLATES ARE CONSIDERED MAIN LOAD CARRYING MEMBERS AND SHALL MEET THE LONGITUDINAL CHARPY V-NOTCH SPECIFIED IN SECT. 807.05 OF THE STANDARD SPECIFICATIONS.



Note: The Contractor shall make check measurements of the existing bridge and make adjustments necessary to fit the new work to the existing structure.

SUPPLEMENTARY DETAILS FOR W-BM. SPANS
MO. PAC. RAILROAD OVERPASS

ROUTE	SEC.
1	1
2	2
3	3
4	4
5	5
6	6
7	7
8	8
9	9
10	10
11	11
12	12
13	13
14	14
15	15
16	16
17	17
18	18
19	19
20	20
21	21
22	22
23	23
24	24
25	25
26	26
27	27
28	28
29	29
30	30
31	31
32	32
33	33
34	34
35	35
36	36
37	37
38	38
39	39
40	40
41	41
42	42
43	43
44	44
45	45
46	46
47	47
48	48
49	49
50	50
51	51
52	52
53	53
54	54
55	55
56	56
57	57
58	58
59	59
60	60
61	61
62	62
63	63
64	64
65	65
66	66
67	67
68	68
69	69
70	70
71	71
72	72
73	73
74	74
75	75
76	76
77	77
78	78
79	79
80	80
81	81
82	82
83	83
84	84
85	85
86	86
87	87
88	88
89	89
90	90
91	91
92	92
93	93
94	94
95	95
96	96
97	97
98	98
99	99
100	100

ARKANSAS STATE HIGHWAY COMMISSION

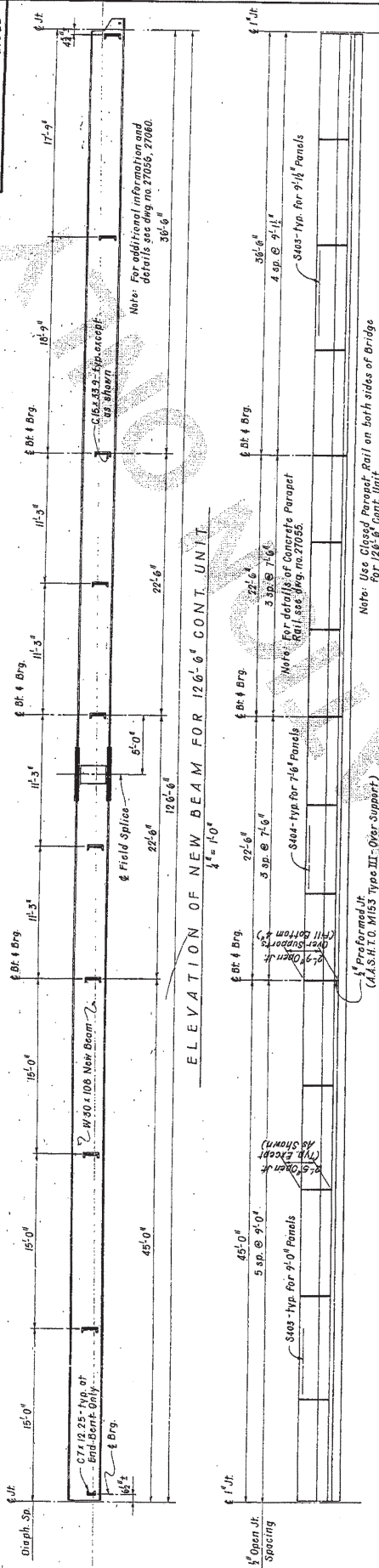
DRAWN BY: H. May DATE: 5-10-84
CHECKED BY: H.D.D. DATE: 8-2-84
DESIGNED BY: GVA DATE: 11-21-83

BRIDGE NO. 2671AR DRAWING NO. 27060

Chas. D. Finkbeiner

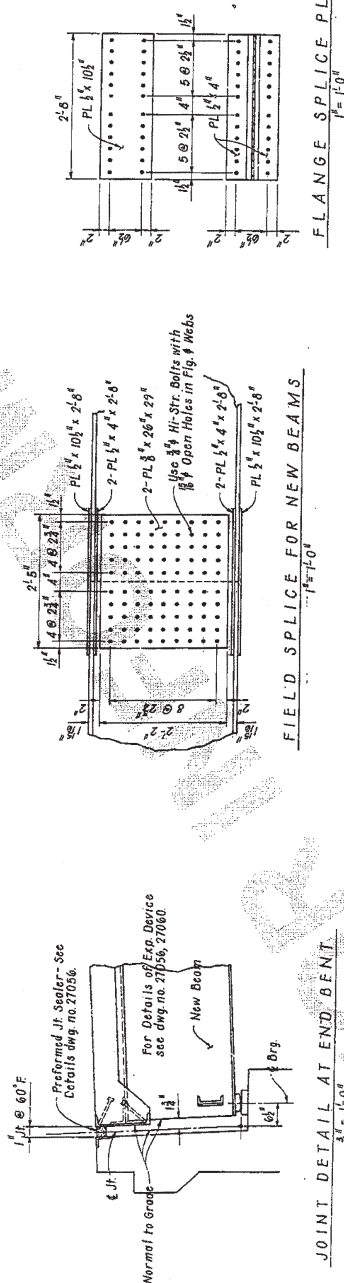
FOR INFORMATION ONLY
UNSWIRING UNIT 27062 1

27062



Note: Use Closed Parapet Rail on both sides of Bridge for 120'-6" Cont. Unit

SPACING FOR CLOSED PARAPET RAIL

$$10^{-1} = 0.1$$


JOINT DETAIL AT END BENT

FIELD SPLICE FOR NEW BEAMS

FLANGE SPLI
 $I^B = 1.0^B$

SHEET 2 OF 2

DETAILS OF 126'-6" CONT. W-BM. UNIT
MO. PAC. RAILROAD OVERPASS

ROUTE SEC.
 ARKANSAS STATE HIGHWAY COMMISSION

LITTLE ROCK, ARK.
5-10-84

As Shown

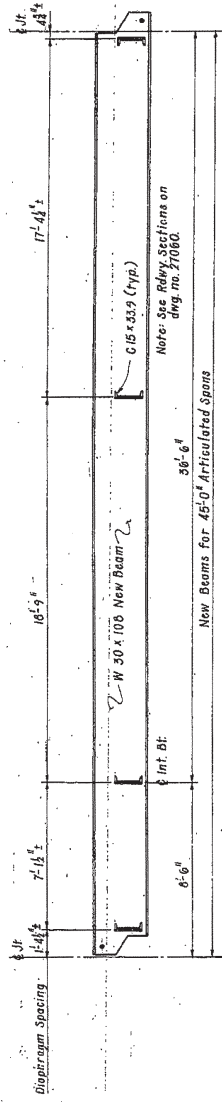
11-21-83

BRIDGE NO. 2671AR DRAWING NO. 27062

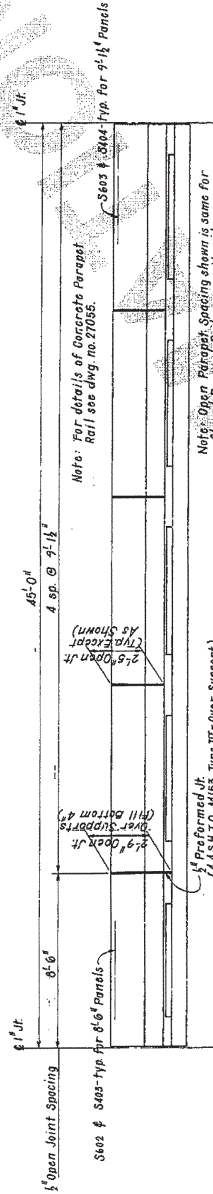
Paul Dickinson

DISTRICT 1 BRIDGE PAINTING (S)

FOR INFORMATION ONLY



ELEVATION OF NEW 45'-0" ARTICULATED SPAN BEAM



SPACING FOR OPEN PARAPET RAIL



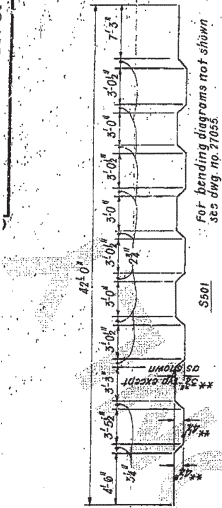
DEAD LOAD DEFLECTION DIAGRAM

DEAD LOAD DEFLECTIONS (INCHES)

Point of Deflection	New Beams				Existing Beams			
	Wt. of Structural Steel	Wt. of Structural Steel & Slab	Wt. of Structural Steel & Slab & Parapet Rail	Wt. of Structural Steel & Slab & Parapet Rail	Wt. of Structural Steel	Wt. of Structural Steel & Slab	Wt. of Structural Steel & Slab & Parapet Rail	Wt. of Structural Steel & Slab & Parapet Rail
A	0.0106	-0.0025	0.0059	-0.0017	0.0106	-0.0015	0.0057	-0.0015
B	0.0133	0.0030	0.0045	0.0076	0.0133	0.0030	0.0045	0.0076
C	0.0247	0.0098	0.0142	0.0169	0.0247	0.0098	0.0142	0.0169
D	0.0235	0.0147	0.0145	0.0203	0.0235	0.0145	0.0203	0.0237
E	0.0106	-0.0025	0.0059	-0.0017	0.0106	-0.0015	0.0057	-0.0015

Note: For Pouring Sequence see des. no. 27061.

ITEM	QTY	UNIT
1	1	EA



BENDING DIAGRAM

**No Under-tolerance, 1/2" Over-tolerance.

BAR LIST

IK	No. Reqd.	Length	Pin Dia.
* S501	42	16'-6"	3/4"
S502	5	6'-2"	3/4"
S503	20	6'-9"	3/4"
* S504	41	45'-0"	3/4"
* S505	42	45'-0"	3/4"
S506	42	45'-0"	3/4"
* S507	66	23'-2"	3/4"
S508	10	6'-2"	3/4"
S509	29	6'-2"	3/4"
S510	40	6'-10"	3/4"
S511	29	5'-2"	3/4"
S512	65	6'-0"	3/4"
S513	45	5'-6"	3/4"

* This bar to be Epoxy Coated. See SP Job 110045 Epoxy Coated Reinforcing Steel.

Note: At the Contractor's option, in lieu of providing bar S501, two straight #5 bars may be substituted with the bar in the top not of bar S501. Payment for reinforcing will be based on the weight of bar S501.

DETAILS OF 45' ARTICULATED SPANS
MO. PAC. RAILROAD OVERPASS

ROUTE
SEC.

ARIZONA STATE HIGHWAY COMMISSION

CHICAGO ILL. DATE 5-10-54
DESIGNED BY: J.M. DATE 11-11-53

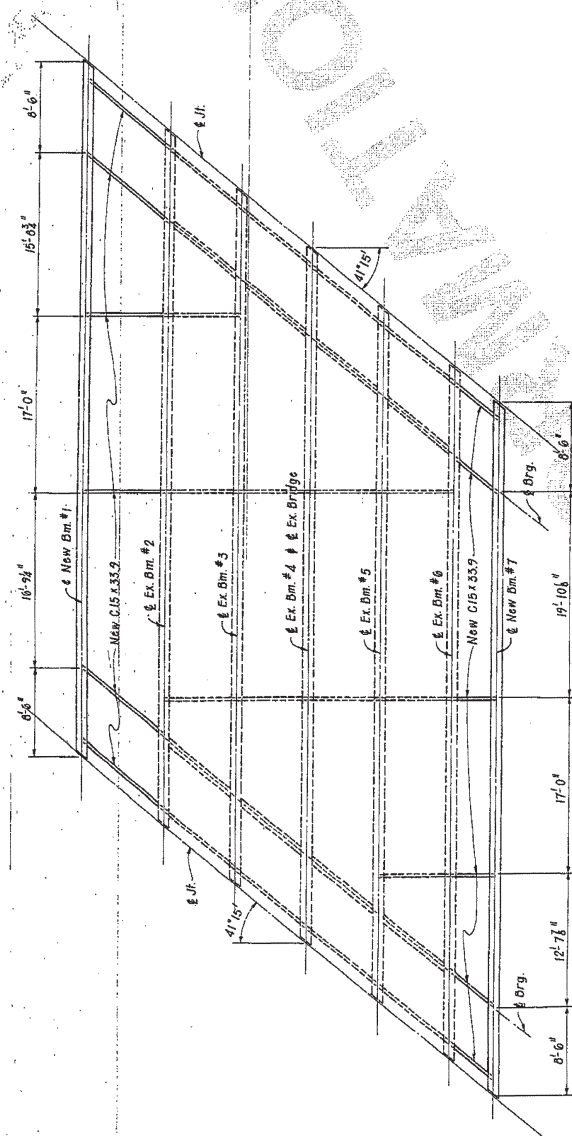
BRIDGE NO. 2671AR DRAWING NO. 27063

Scale: As Shown

FOR INFORMATION ONLY

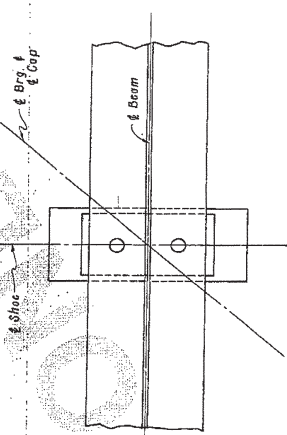
[illegible]

Note: All Beams (New & Ex.) are 66'-6" c-c. Jts.



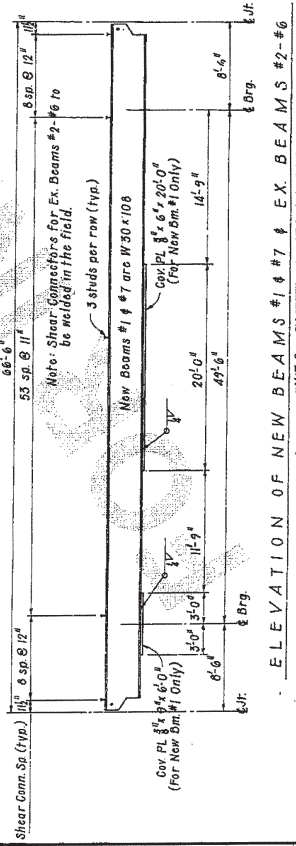
FRAMING PLAN
N.T.S.

For Details of Shoes & Anchor Bolts see dwg. no. 27056
 For Details of Exp. Device see dwg. no. 27060, 27065
 For Details of Shear Connectors see dwg. no. 27065
 For Supplementary Details see dwg. no. 27056, 27060.



TYP. BEARING PLAN AT PIERS 1 & 2
N.T.S.

4^A-Bm. #1
4^A-Bm. #2
5^A-Bm. #3
6^A-Bm. #4
7^A-Bm. #5
9^A-Bm. #6
4^A-Bm. #7



ELEVATION OF NEW BEAMS #1 & #7 & EX. BEAMS #2-#6

SHEET 2 OF 2

DETAILS OF 66'-6" SKEWED SPAN
MO. PAC. RAILROAD OVERPASS

ROUTE SEC.

ARKANSAS STATE HIGHWAY COMMISSION

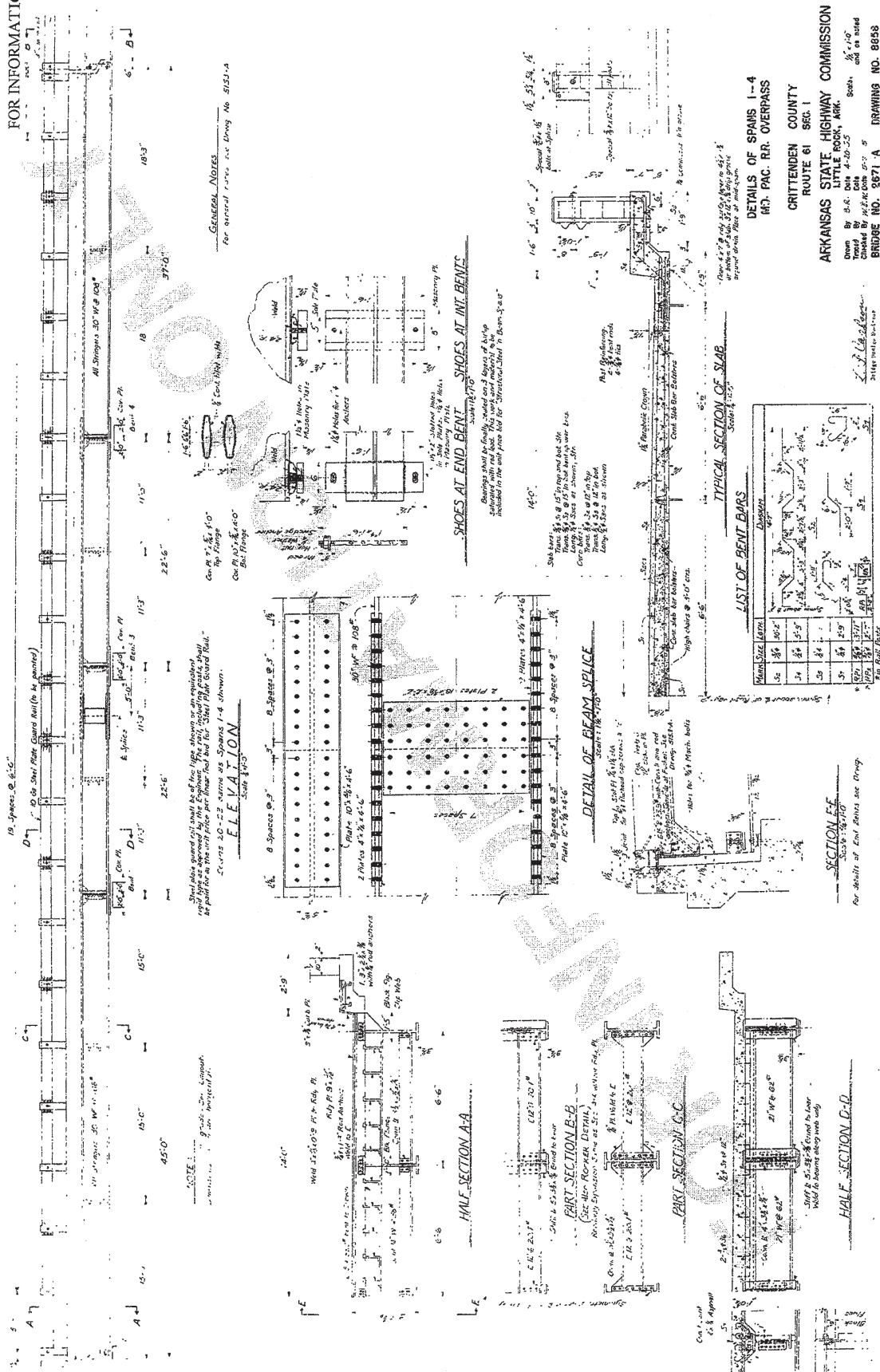
DRAWN BY: W. Maj. DATE: 5-23-84
 CHECKED BY: HAD DATE: 8-9-84
 DESIGNED BY: GVA DATE: 11-21-83

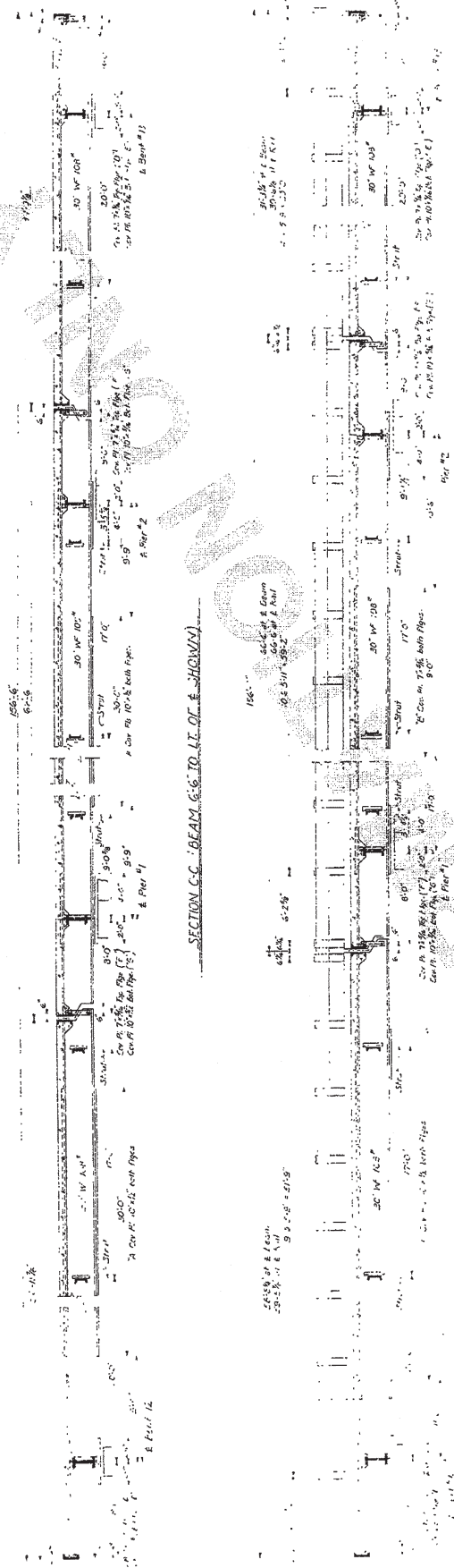
SCALE: AS SHOWN

DRAWING NO. 27067

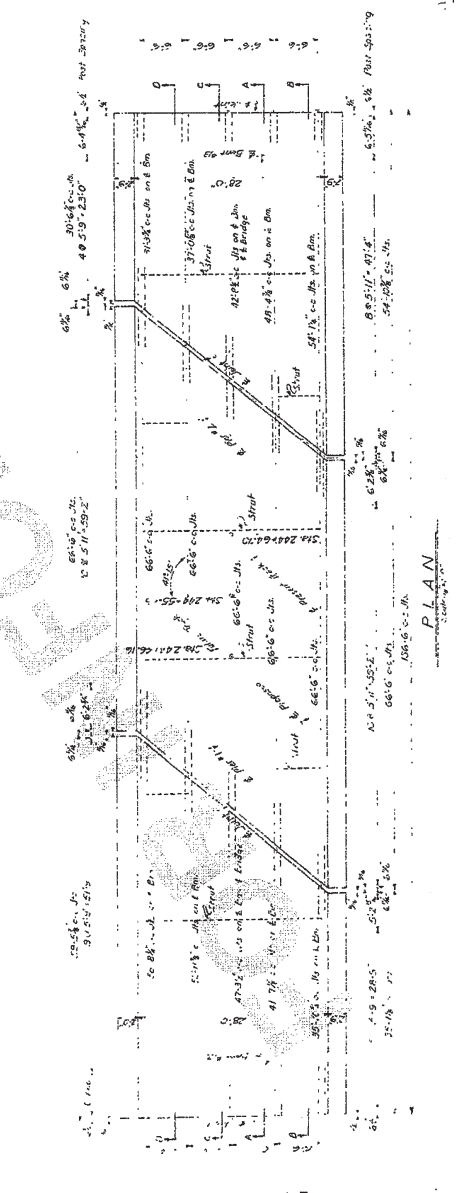
BRIDGE NO. 2671AR

FOR INFORMATION ONLY





SECTION D-D (LEFT HAND CURB BEAM SHOWN)



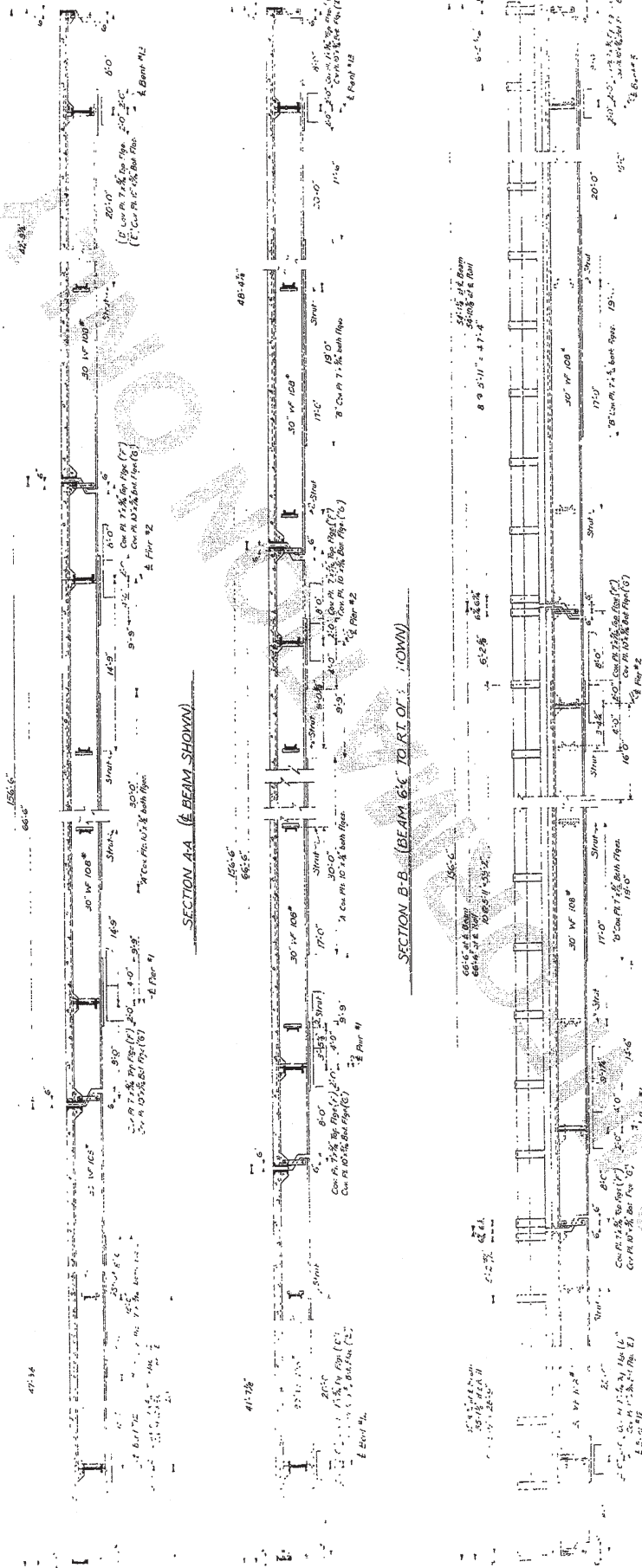
DETAILS OF
SKEWED & TRANSITION SPANS
MO. PAC. RR. OVERPASS

CRITTEIDEN COUNTY
ROUTE 61 SEC. 1

ARKANSAS STATE HIGHWAY COMMISSION
LITTLE ROCK, ARK.
Drawn By: S. C. [illegible]
Checked By: [illegible]
Bridge No. 2871-A
Drawing No. 8959

FOR INFORMATION ONLY

15517 1/2 28

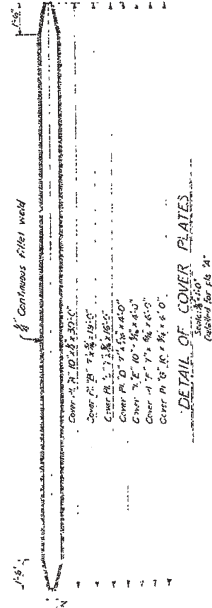


DETAILS OF
SKEWED & TRANSITION SPANS
MO. PAC. R.R. OVERPASS

CRITTENDEN COUNTY
ROUTE 61 SEC. 1

ARKANSAS STATE HIGHWAY COMMISSION
CITIZENSHIP, ARK.
DRAWING NO. 8860

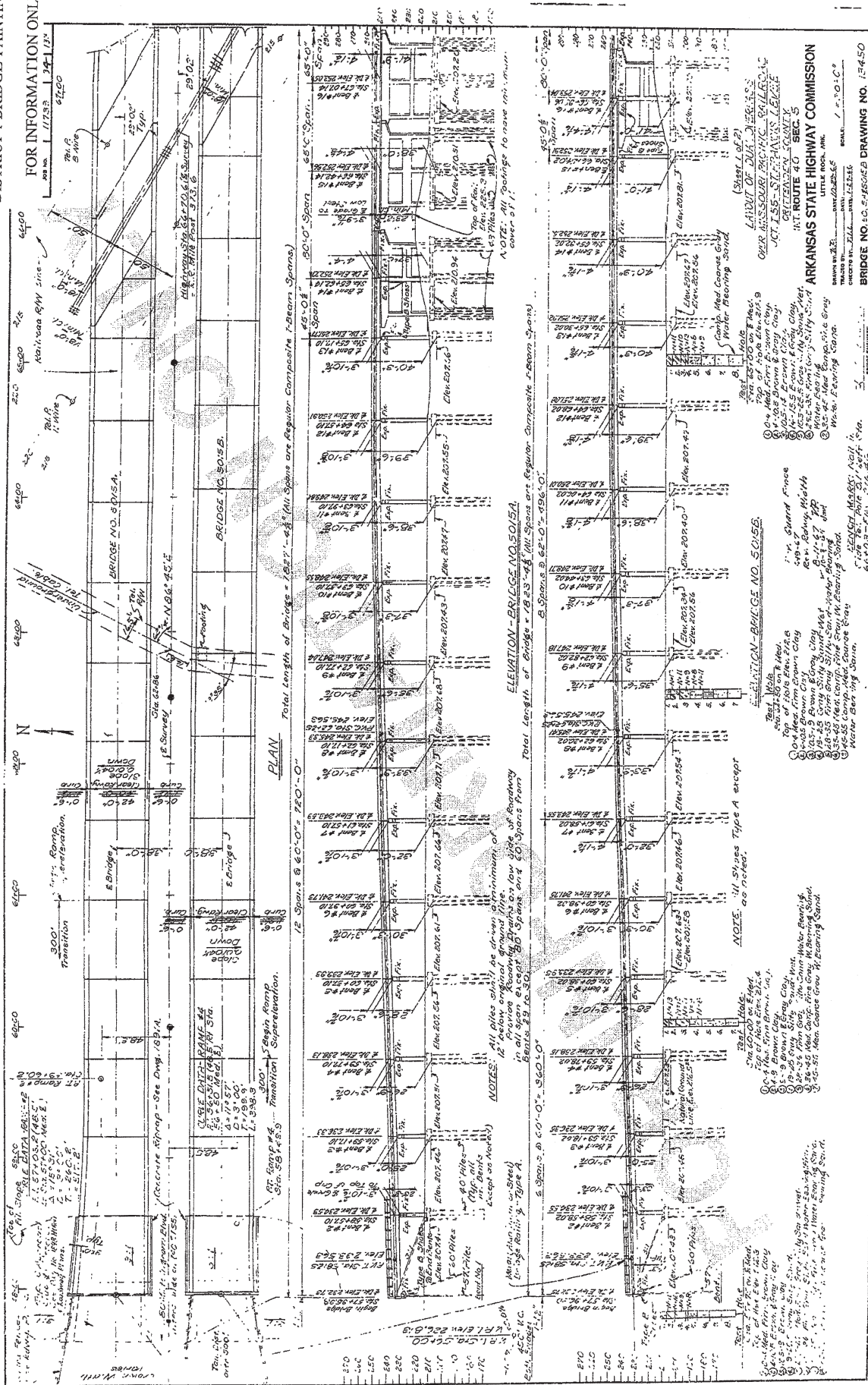
For details not shown here, see Group # 8153-A, 8153-B, 8153-C, 8153-D, 8153-E, 8153-F, 8153-G, 8153-H, 8153-I, 8153-J, 8153-K, 8153-L, 8153-M, 8153-N, 8153-O, 8153-P, 8153-Q, 8153-R, 8153-S, 8153-T, 8153-U, 8153-V, 8153-W, 8153-X, 8153-Y, 8153-Z, 8153-AA, 8153-AB, 8153-AC, 8153-AD, 8153-AE, 8153-AF, 8153-AG, 8153-AH, 8153-AI, 8153-AJ, 8153-AL, 8153-AM, 8153-AN, 8153-AO, 8153-AP, 8153-AQ, 8153-AR, 8153-AS, 8153-AT, 8153-AU, 8153-AV, 8153-AW, 8153-AX, 8153-AY, 8153-AZ, 8153-BA, 8153-BB, 8153-BC, 8153-BD, 8153-BE, 8153-BF, 8153-BG, 8153-BH, 8153-BI, 8153-BJ, 8153-BL, 8153-BM, 8153-BN, 8153-BO, 8153-BP, 8153-BQ, 8153-BR, 8153-BS, 8153-BT, 8153-BU, 8153-BV, 8153-BW, 8153-BX, 8153-BY, 8153-BZ, 8153-CA, 8153-CB, 8153-CC, 8153-CD, 8153-CE, 8153-CF, 8153-CG, 8153-CH, 8153-CI, 8153-CJ, 8153-CL, 8153-CM, 8153-CN, 8153-CO, 8153-CP, 8153-CQ, 8153-CR, 8153-CS, 8153-CT, 8153-CU, 8153-CV, 8153-CW, 8153-CX, 8153-CY, 8153-CZ, 8153-DA, 8153-DB, 8153-DC, 8153-DD, 8153-DE, 8153-DF, 8153-DG, 8153-DH, 8153-DI, 8153-DJ, 8153-DL, 8153-DM, 8153-DN, 8153-DO, 8153-DP, 8153-DQ, 8153-DR, 8153-DS, 8153-DT, 8153-DU, 8153-DV, 8153-DW, 8153-DX, 8153-DY, 8153-DZ, 8153-EA, 8153-EB, 8153-EC, 8153-ED, 8153-EE, 8153-EF, 8153-EG, 8153-EH, 8153-EI, 8153-EJ, 8153-EL, 8153-EM, 8153-EN, 8153-EO, 8153-EP, 8153-EQ, 8153-ER, 8153-ES, 8153-ET, 8153-EU, 8153-EV, 8153-EW, 8153-EX, 8153-EY, 8153-EZ, 8153-FA, 8153-FB, 8153-FC, 8153-FD, 8153-FE, 8153-FG, 8153-FH, 8153-FI, 8153-FJ, 8153-FL, 8153-FM, 8153-FN, 8153-FO, 8153-FP, 8153-FQ, 8153-FR, 8153-FS, 8153-FT, 8153-FU, 8153-FV, 8153-FW, 8153-FX, 8153-FY, 8153-FZ, 8153-GA, 8153-GB, 8153-GC, 8153-GD, 8153-GE, 8153-GF, 8153-GG, 8153-GH, 8153-GI, 8153-GJ, 8153-GL, 8153-GM, 8153-GN, 8153-GO, 8153-GP, 8153-GQ, 8153-GR, 8153-GS, 8153-GT, 8153-GU, 8153-GV, 8153-GW, 8153-GX, 8153-GY, 8153-GZ, 8153-HA, 8153-HB, 8153-HC, 8153-HD, 8153-HE, 8153-HF, 8153-HG, 8153-HH, 8153-HI, 8153-HJ, 8153-HL, 8153-HM, 8153-HN, 8153-HO, 8153-HP, 8153-HQ, 8153-HR, 8153-HS, 8153-HT, 8153-HU, 8153-HV, 8153-HW, 8153-HX, 8153-HY, 8153-HZ, 8153-IA, 8153-IB, 8153-IC, 8153-ID, 8153-IE, 8153-IF, 8153-IG, 8153-IH, 8153-II, 8153-IJ, 8153-IL, 8153-IM, 8153-IN, 8153-IO, 8153-IP, 8153-IQ, 8153-IR, 8153-IS, 8153-IT, 8153-IU, 8153-IV, 8153-IW, 8153-IX, 8153-IY, 8153-IZ, 8153-JA, 8153-JB, 8153-JC, 8153-JD, 8153-JE, 8153-JF, 8153-JG, 8153-JH, 8153-JI, 8153-JJ, 8153-JL, 8153-JM, 8153-JN, 8153-JO, 8153-JP, 8153-JQ, 8153-JR, 8153-JS, 8153-JT, 8153-JU, 8153-JV, 8153-JW, 8153-JX, 8153-JY, 8153-JZ, 8153-KA, 8153-KB, 8153-KC, 8153-KD, 8153-KE, 8153-KF, 8153-KG, 8153-KH, 8153-KI, 8153-KJ, 8153-KL, 8153-KM, 8153-KN, 8153-KO, 8153-KP, 8153-KQ, 8153-KR, 8153-KS, 8153-KT, 8153-KU, 8153-KV, 8153-KW, 8153-KX, 8153-KY, 8153-KZ, 8153-LA, 8153-LB, 8153-LC, 8153-LD, 8153-LE, 8153-LF, 8153-LG, 8153-LH, 8153-LI, 8153-LJ, 8153-LK, 8153-LM, 8153-LN, 8153-LO, 8153-LP, 8153-LQ, 8153-LR, 8153-LS, 8153-LT, 8153-LU, 8153-LV, 8153-LW, 8153-LX, 8153-LY, 8153-LZ, 8153-MA, 8153-MB, 8153-MC, 8153-MD, 8153-ME, 8153-MF, 8153-MG, 8153-MH, 8153-MI, 8153-MJ, 8153-MK, 8153-ML, 8153-MM, 8153-MN, 8153-MO, 8153-MP, 8153-MQ, 8153-MR, 8153-MS, 8153-MT, 8153-MU, 8153-MV, 8153-MW, 8153-MX, 8153-MY, 8153-MZ, 8153-NA, 8153-NB, 8153-NC, 8153-ND, 8153-NE, 8153-NF, 8153-NG, 8153-NH, 8153-NI, 8153-NJ, 8153-NK, 8153-NL, 8153-NM, 8153-NN, 8153-NO, 8153-NP, 8153-NQ, 8153-NR, 8153-NS, 8153-NT, 8153-NU, 8153-NV, 8153-NW, 8153-NX, 8153-NY, 8153-NZ, 8153-OA, 8153-OB, 8153-OC, 8153-OD, 8153-OE, 8153-OF, 8153-OG, 8153-OH, 8153-OI, 8153-OJ, 8153-OL, 8153-OM, 8153-ON, 8153-OO, 8153-OP, 8153-OQ, 8153-OR, 8153-OS, 8153-OT, 8153-OU, 8153-OV, 8153-OW, 8153-OX, 8153-OY, 8153-OZ, 8153-PA, 8153-PB, 8153-PC, 8153-PD, 8153-PE, 8153-PF, 8153-PG, 8153-PH, 8153-PI, 8153-PJ, 8153-PK, 8153-PL, 8153-PM, 8153-PN, 8153-PO, 8153-PP, 8153-PQ, 8153-PR, 8153-PS, 8153-PT, 8153-PU, 8153-PV, 8153-PW, 8153-PX, 8153-PY, 8153-PZ, 8153-QA, 8153-QB, 8153-QC, 8153-QD, 8153-QE, 8153-QF, 8153-QG, 8153-QH, 8153-QI, 8153-QJ, 8153-QL, 8153-QM, 8153-QN, 8153-QO, 8153-QP, 8153-QQ, 8153-QR, 8153-QS, 8153-QT, 8153-QU, 8153-QV, 8153-QW, 8153-QX, 8153-QY, 8153-QZ, 8153-RA, 8153-RB, 8153-RC, 8153-RD, 8153-RE, 8153-RF, 8153-RG, 8153-RH, 8153-RI, 8153-RJ, 8153-RK, 8153-RL, 8153-RM, 8153-RN, 8153-RO, 8153-RP, 8153-RQ, 8153-RR, 8153-RS, 8153-RT, 8153-RU, 8153-RV, 8153-RW, 8153-RX, 8153-RY, 8153-RZ, 8153-SA, 8153-SB, 8153-SC, 8153-SD, 8153-SE, 8153-SF, 8153-SG, 8153-SH, 8153-SI, 8153-SJ, 8153-SK, 8153-SL, 8153-SM, 8153-SN, 8153-SO, 8153-SP, 8153-SQ, 8153-SR, 8153-SS, 8153-ST, 8153-SU, 8153-SV, 8153-SW, 8153-SX, 8153-SY, 8153-SZ, 8153-TA, 8153-TB, 8153-TC, 8153-TD, 8153-TE, 8153-TF, 8153-TG, 8153-TH, 8153-TI, 8153-TJ, 8153-TK, 8153-TL, 8153-TM, 8153-TN, 8153-TO, 8153-TP, 8153-TQ, 8153-TR, 8153-TS, 8153-TT, 8153-TU, 8153-TV, 8153-TW, 8153-TX, 8153-TY, 8153-TZ, 8153-UA, 8153-UB, 8153-UC, 8153-UD, 8153-UE, 8153-UF, 8153-UG, 8153-UH, 8153-UI, 8153-UJ, 8153-UK, 8153-UL, 8153-UM, 8153-UN, 8153-UO, 8153-UP, 8153-UQ, 8153-UR, 8153-US, 8153-UT, 8153-UY, 8153-UZ, 8153-VA, 8153-VB, 8153-VC, 8153-VD, 8153-VE, 8153-VF, 8153-VG, 8153-VH, 8153-VI, 8153-VJ, 8153-VK, 8153-VL, 8153-VM, 8153-VN, 8153-VO, 8153-VP, 8153-VQ, 8153-VR, 8153-VS, 8153-VT, 8153-VU, 8153-VV, 8153-VW, 8153-VX, 8153-VY, 8153-VZ, 8153-WA, 8153-WB, 8153-WC, 8153-WD, 8153-WE, 8153-WF, 8153-WG, 8153-WH, 8153-WI, 8153-WJ, 8153-WK, 8153-WL, 8153-WM, 8153-WN, 8153-WO, 8153-WP, 8153-WQ, 8153-WR, 8153-WS, 8153-WT, 8153-WU, 8153-WV, 8153-WX, 8153-WY, 8153-WZ, 8153-XA, 8153-XB, 8153-XC, 8153-XD, 8153-XE, 8153-XF, 8153-XG, 8153-XH, 8153-XI, 8153-XJ, 8153-XK, 8153-XL, 8153-XM, 8153-XN, 8153-XO, 8153-XP, 8153-XQ, 8153-XR, 8153-XS, 8153-XT, 8153-XU, 8153-XV, 8153-XW, 8153-XX, 8153-XY, 8153-XZ, 8153-YA, 8153-YB, 8153-YC, 8153-YD, 8153-YE, 8153-YF, 8153-YG, 8153-YH, 8153-YI, 8153-YJ, 8153-YK, 8153-YL, 8153-YM, 8153-YN, 8153-YO, 8153-YP, 8153-YQ, 8153-YR, 8153-YS, 8153-YT, 8153-YU, 8153-YV, 8153-YW, 8153-YX, 8153-YY, 8153-YZ, 8153-ZA, 8153-ZB, 8153-ZC, 8153-ZD, 8153-ZE, 8153-ZF, 8153-ZG, 8153-ZH, 8153-ZI, 8153-ZJ, 8153-ZK, 8153-ZL, 8153-ZM, 8153-ZN, 8153-ZO, 8153-ZP, 8153-ZQ, 8153-ZR, 8153-ZS, 8153-ZT, 8153-ZU, 8153-ZV, 8153-ZW, 8153-ZX, 8153-ZY, 8153-ZZ

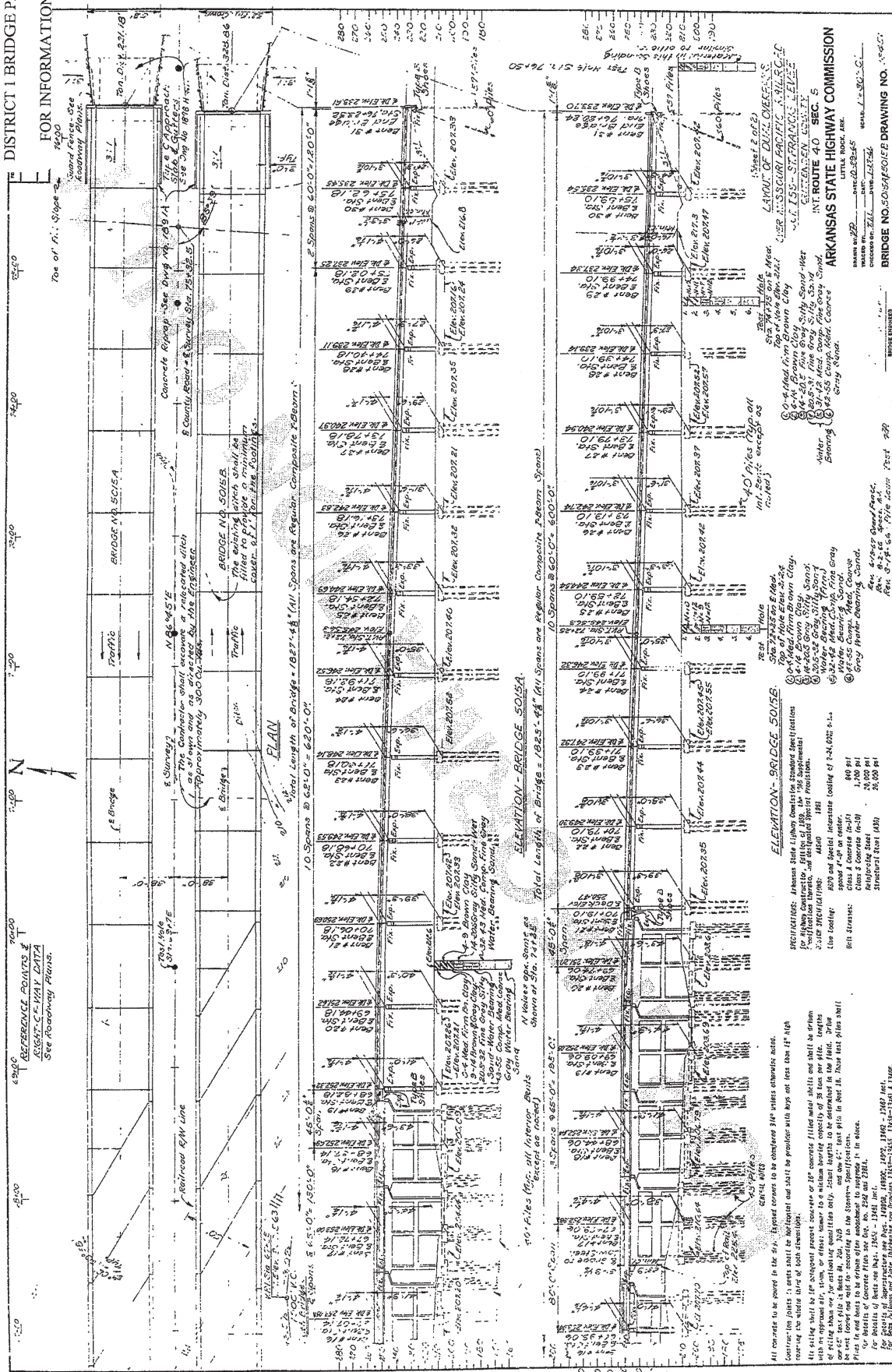


DETAIL OF COVER PLATES

Revised for 10' 4"

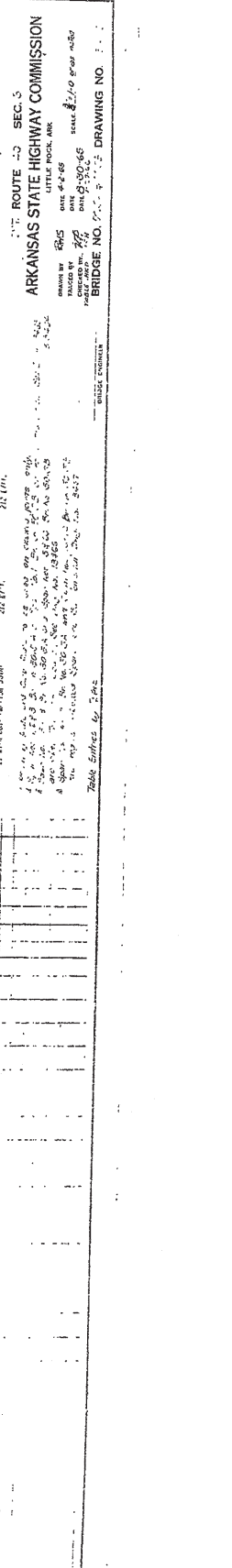
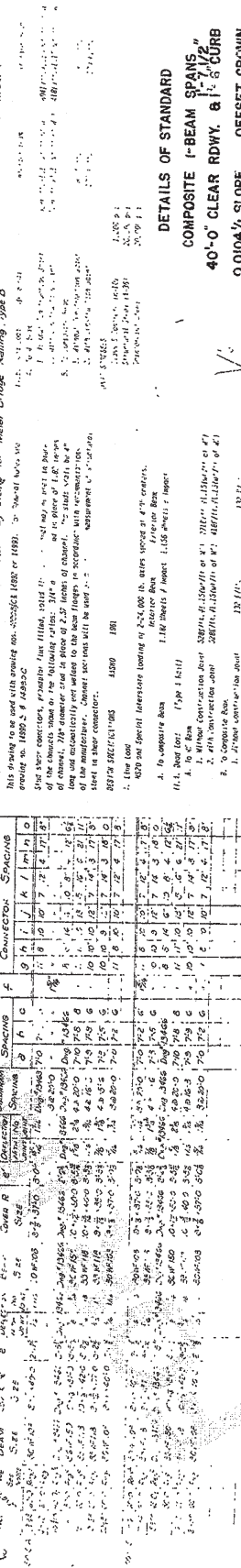
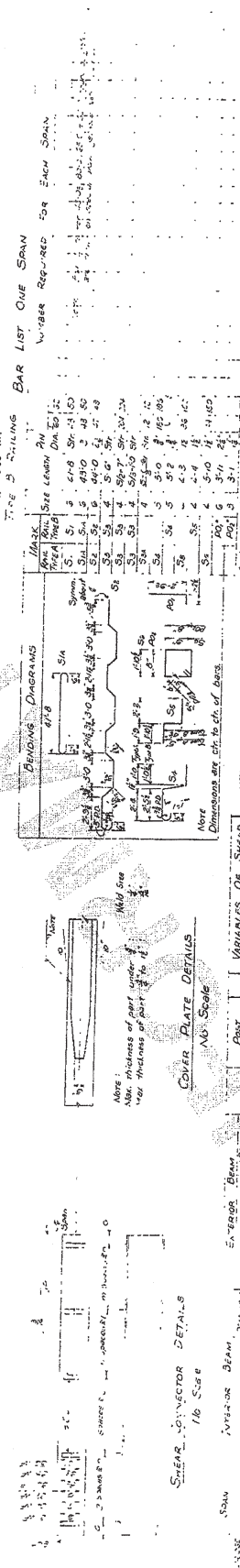
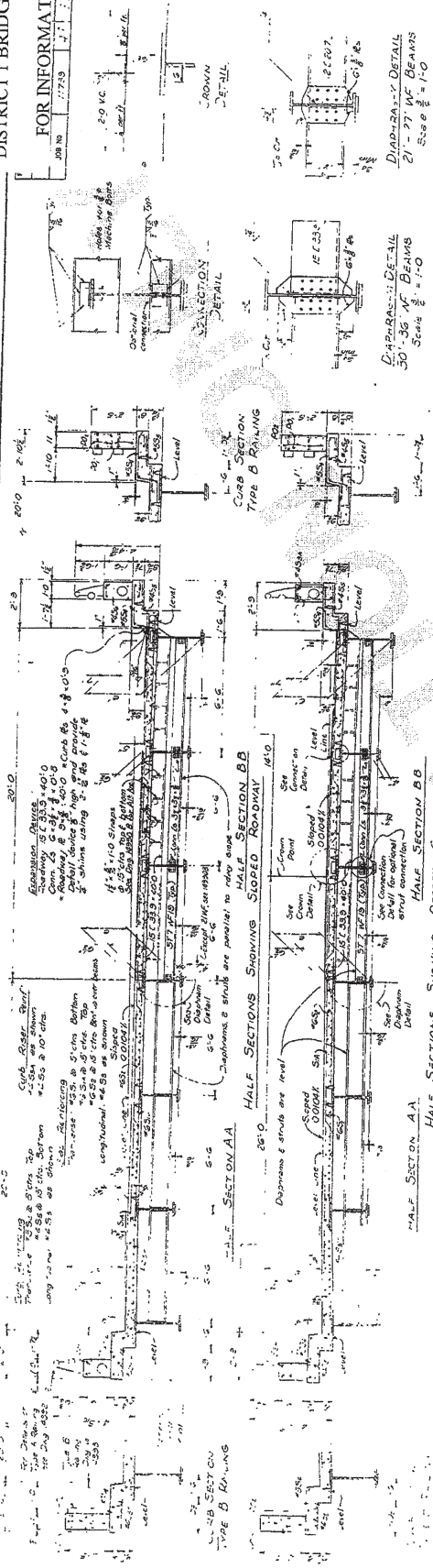
FOR INFORMATION ONLY





DISTRICT 1 BRIDGE PAINTING (S)

FOR INFORMATION ONLY

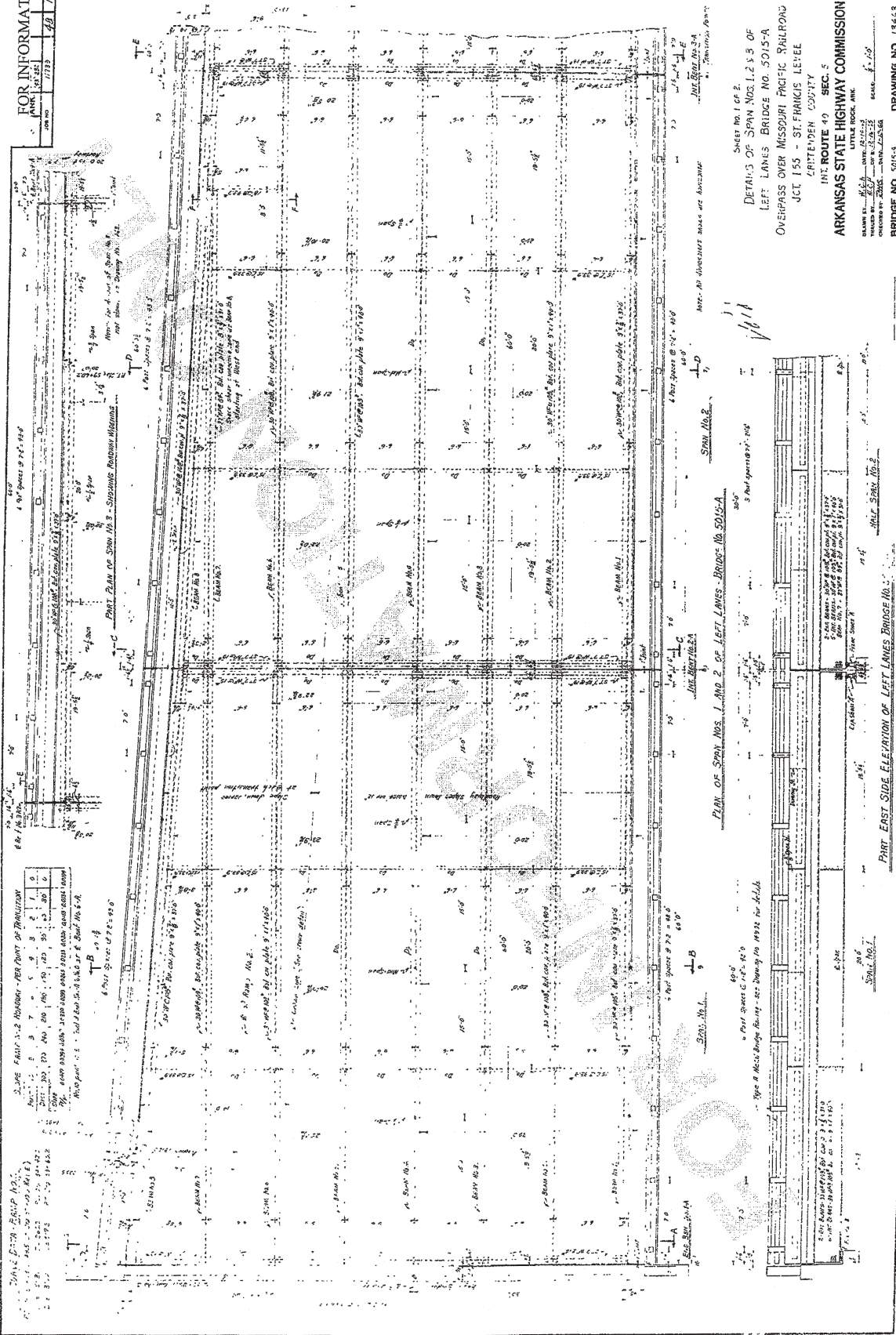


DETAILS OF STANDARD
COMPOSITE I-BEAM SPANS
40'-0" CLEAR RDY. & 1/2" CURB
0.0104 1/4 SLOPE, OFFSET CROWN

THE ROUTE 10 SEC. 3
ARKANSAS STATE HIGHWAY COMMISSION
LITTLE ROCK, ARK.
DATE 10-10-66
DRAWING NO. 110547

FOR INFORMATION ONLY

1773	48	135
------	----	-----



SHEET NO. 1 OF 2
DETAILS OF SPAN NOS. 1, 2, 3 OF
LEFT LANES BRIDGE NO. 5015-A
OVERPASS OVER MISSOURI PACIFIC RAILROAD
JCT 155 - ST. FRANCIS LEVEE
CENTRENDEN COUNTY
ROUTE 40 SEC. 5
ARIZONA STATE HIGHWAY COMMISSION
LITTLE ROCK, ARK.
DRAWN BY: [Signature]
CHECKED BY: [Signature]
BRIDGE NO. 5015-A
DRAWING NO. 13463